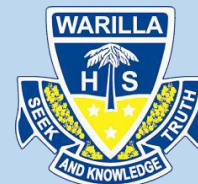


Warilla High School Newsletter

KALORI



Keross Avenue Barrack Heights NSW 2528
T: 02 42963055 F: 02 42972817
E: warilla-h.school@det.nsw.edu.au FB: [/WarillaHigh](https://www.facebook.com/WarillaHigh)
W: <http://www.warilla-h.schools.nsw.edu.au>

5 September 2016

Issue 2 – Term 3 – Week 8

Principal's Message

The term is certainly moving ahead at great speed with several major events already having taken place. Prime among these was the Trail HSC which saw our HSC candidature put through their paces with some challenging examination items. We have tried to replicate the exact conditions students will experience in the HSC proper, right down to employing the HSC Presiding Officer and independent exam supervisors who will control the HSC. The feedback from students and staff alike has been positive and the results have reflected the time and commitment students have devoted to their work. It is now absolutely crucial that students maintain their focus and intent with regular and sustained revision that is active in nature. Note taking, mind-mapping, questions from past papers and familiarity with what constitutes a higher order response should all be included in this repertoire. I have no doubt our kids will do themselves and their families proud come October 13th!

I look forward to our Year 12 Graduation on the 22 September, where we can acknowledge a wonderful group of students with family and friends. We have recently farewelled our Japanese Homestay students who were hosted by our families for approx. 10 days. The positive feedback from both host families and students alike has been quite overwhelming. If the object of the exercise was to immerse our visitors in an Australian lifestyle that showcased what was best about our country, its education system and the beautiful place in which we live, then it has been a rousing success! The by-products for us include friendships and cultural understandings that serve to bring young people closer together with an empathetic understanding of shared and different viewpoints about national and international affairs. It has again served to strengthen our efforts to promote the study of a language as Asian countries rapidly become Australia's leading trading and commerce partners.

We have also recently completed a Vocational Education and Training (VET) Audit to ensure we comply with the Registered Training Organisation's (DOE) commitments related to the delivery of industry accredited courses such as:

- Retail,
- Business Services
- Building and Construction
- Sports Coaching
- Metals and Engineering
- Hospitality

I am pleased to advise that the External Audit Team were very impressed with our facilities, the industry currency of teachers delivering the respective courses and the myriad of compliance related documentation. I would like to thank all of our VET teachers, and especially Ms Brook and Ms Sheridan who guided, led and cajoled staff and students to ensure a positive result!

Well done to all!

Finally, we are currently developing our curriculum patterns for our 2017 cohort. This includes elective subjects in years 8-10 and the substantial and broad curriculum offerings that make up our senior school. This process has involved student interviews, parent information evenings, careers counselling, the assessment of applications for niche courses, and expert opinion on students suggested patterns of study. The aim here is to set students up for success with a relevant curriculum that reflects a 21st century intent.

I look forward to seeing you all at our next P&C meeting on Tuesday 13 September at the new starting time of 6pm.

With my kind regards,
John Hambly

Our School's Core Values:

Care for your environment
Embrace honesty
Respect others and value yourself
Seek knowledge

W: <http://www.warilla-h.schools.nsw.edu.au> FB: [/WarillaHigh](https://www.facebook.com/WarillaHigh)

Page 1

Deputies Report

It has been terrific to see the great majority of students working hard during the first half of Term 3. A group of students from each year group have been rewarded for their outstanding half yearly reports through morning teas and pizza days. This term has a great deal of critical learning and assessments for each year group. Many students are also currently taking the opportunity to utilise the programs on offer at WHS. Our students do an outstanding job when they represent the school and this has been the case at many recent events such as Tournament of the Minds, Working like a Mathematician at the University of Wollongong, Illawarra Trades Roadshow, South Coast Athletics and the Senior First Aid Certificate Course.

There are a number of important reminders for students and parents for the later part of Term 3 including:

School Uniform - As the weather gets warmer, students will need to ensure they have suitable summer uniform items. Our uniform shop is open on Wednesday afternoons and Friday mornings. If students or families require assistance to purchase uniform, please contact the school as we are happy to assist.


Subject Selection – during this term, students in Years 10, 8 and 7 have been making subject choices for 2017. This is an exciting time when students get the opportunity to choose electives and in the case of Year 10 into 11 their subject pattern for next year. Subject selection booklets are available for students, please follow the directions that have been provided regarding the online process. If you have any questions please see your Year Adviser as soon as possible.

Tell Them From Me – Parent Survey (Partners in Learning) – As you may be aware, our students and staff have been participating in the Tell Them From Me Surveys across a number of years now. The information we have gained from these surveys has been outstanding and has assisted our school to plan for and make changes and improvements to enhance student learning. This term parents will have an opportunity to complete a Tell Them From Me survey specially designed for parents titled the *Partners in Learning* survey.


This survey will assist the school to gain essential feedback from parents and carers. The focus of the survey is student wellbeing, engagement and effective teaching practices. The survey questions aim at understanding the perspectives of our parents on their child's experience at school including teaching, communication, activities and practices at home and the school's support of learning and behaviour. Please see the attached FAQ sheet for further information about the survey. More information will follow soon regarding the timing of this survey for parents at Warilla High School.

Deputy Principals

Mrs Raison, Ms Brook and Mr Stanizzo



PANORAMA HOUSE
RESTAURANT • FUNCTION CENTRE • BAR • HOTEL • MOTEL



811 Princes Highway, Madden Plains NSW
TELEPHONE 02 4268 3388 • MOBILE 0433 533 808 • FACSIMILE 02 4267 1163
EMAIL enquiries@panoramahouse.com.au • www.panoramahouse.com.au



We are proud to announce we now have a Facebook page!

Please visit the link below, like and share our page.

<https://www.facebook.com/WarillaHigh>

Our Facebook feed will also appear at the bottom of our website and in our Skoolbag App.

Seek knowledge

Our School's Core Values:

Care for your environment

Embrace honesty

Respect others and value yourself

Seek knowledge

Page 2

W: <http://www.warilla-h.schools.nsw.edu.au> FB: /WarillaHigh



Education
Centre for Education
Statistics & Evaluation

Tell Them From Me parent survey Frequently Asked Questions (parents and carers)

Centre for Education Statistics and Evaluation

1. What is the Partners in Learning parent survey?

The Partners in Learning parent survey is part of the *Tell Them From Me* suite of surveys on student engagement. The parent survey helps to clarify and strengthen the important relationship between parent and school.

The survey is designed to measure, assess and report insights from the parent point of view at the school and system levels. The focus of this NSW survey is on student wellbeing, engagement and effective teaching practices.

2. What kind of questions will the survey ask?

The survey questions aim at understanding parents' perspectives on their child's experience at school, including teaching, communication and the school's support of learning and behaviour. The survey also aims to understand parents' perspectives on activities and practices at home related to their child's learning.

The survey will ask parents questions about:

Parents feel welcome	Parents are informed	Parents support learning at home	Parents participation at school
School supports positive behaviour	Safety	Inclusion	School supports learning

3. How have schools been selected to take part?

The survey is open to all NSW government schools at no cost to them. Your school has decided to participate.

4. How will taking part in this survey benefit my child's school?

The parent survey provides school principals and school leaders with parents' perspectives on their school as well as learning at home. Communication between parents and staff, activities and practices at home, and parent views on the school's support of learning and behaviour help build an accurate and timely picture that schools can use for practical improvements.

Data collected from the survey responses are quickly compiled into reports for school leaders. Principals can then use this information to help them identify emerging issues and plan for school improvement.

5. How does the parent survey relate to the student survey?

The parent survey is complementary to the *Tell Them From Me* student survey that your child may have been asked to complete. These surveys are offered (along with a teacher survey) to ensure schools can capture the views of students, teachers and parents.

For more detail on each of the surveys, see the survey website: <http://surveys.cese.nsw.gov.au/>

6. What do I need to do to participate in the survey?

The survey typically takes 15 minutes and is conducted entirely online through a secure website operated by the survey developers, *The Learning Bar*. You will be provided with a link to complete the survey at home or your school may make computers available so that you can complete the survey during school hours.

7. Do I need to participate?

No, participation in the survey is optional. Whilst your responses are very much appreciated, if during the survey, you feel uncomfortable, you can stop the survey at any time. The majority of questions in the survey can be skipped.

8. Will the school be able to identify me or my child from my responses?

Staff in schools will not be able to identify individual parents or students from parent responses. To protect parent anonymity, schools will be provided with a single username and password for the school prior to the start of the survey period. This username and password will then be distributed to parents. Data suppression rules are applied to the school reporting tools where there are fewer than five responses.

9. What sort of analysis will be done of the survey data?

Once the surveys are completed, reports are prepared and in most cases are available to schools within three business days. School leaders can use the data to better understand the experiences and views of parents at their school.

CESE will undertake state-wide analysis of the survey data in conjunction with existing student data held by the Department, including performance data. The results will help all schools better understand the relationship between parents and students' engagement, students' wellbeing, effective teaching and student learning. Results from CESE's analysis of this data will also help teachers and principals discuss what works to improve student outcomes. This supports the Department's continuing focus on quality teaching and leadership. The data will be retained for future analysis to help us better understand the nature of student engagement and wellbeing over time.

10. When will the Partners in Learning survey happen?

The surveys will be conducted in all participating schools between Monday 22nd August (Week 6, Term 3) and Friday 21st October 2016 (Week 2, Term 4).

What is CESE?

The Centre for Education Statistics and Evaluation (CESE) is part of the Department of Education.

CESE has been established to improve the effectiveness, efficiency and accountability of education in New South Wales.

CESE will identify and share what works, creating new opportunities to improve teaching and learning across all of education.

More information about CESE is available at: www.cese.nsw.gov.au

What is *The Learning Bar*?

The Learning Bar is a Canadian education company that specialises in school surveys for both primary and secondary students. Its survey, *Tell Them From Me*, is the largest national school survey in Canada, used in nine of Canada's ten provinces. More than 2,600 schools and 1.7 million Canadian students have participated in the survey over the last nine years. Australian schools have been participating in the *Tell Them From Me* surveys since 2012.

The Learning Bar is led by Dr J Douglas Willms. Dr Willms is a Professor and Director of the Canadian Research Institute for Social Policy at the University of New Brunswick, and holds the Canada Research Chair in Literacy and Human Development. Dr Willms led the development of questions on student engagement for the OECD's Programme for International Student Assessment (PISA).

More information about *The Learning Bar* is available at: www.thelearningbar.com

If you have any questions about the parent survey, please contact CESE via email: TTFM@det.nsw.edu.au or by telephone: 9561 8056 / 9561 8370.

Week 8B

5 September	<ul style="list-style-type: none"> Yr 12 HSC Music submitted work – Completion and hand in Y8 CAT task and Y9 English CAT task
6 September	<ul style="list-style-type: none"> Yr 7 English Speeches
7 September	<ul style="list-style-type: none"> NSW CHS Athletics
8 September	<ul style="list-style-type: none"> Uni for Certain – Year 7 CAP 1 R U OK DAY
9 – 20 September	<ul style="list-style-type: none"> Yr 11 Preliminary Exams
9 September	<ul style="list-style-type: none"> Yr 12 Geography excursion Yr 7 CAP Sydney excursion

Week 9A

12 – 20 September	<ul style="list-style-type: none"> Yr 11 Preliminary Exams
12 September	<ul style="list-style-type: none"> Yr 10 English CAT task
16 September	<ul style="list-style-type: none"> STEM Roadshow

Week 10B

19 – 20 September	<ul style="list-style-type: none"> Yr 11 Preliminary Exams
20 September	<ul style="list-style-type: none"> Graduation Practice – 11.30am
21 September	<ul style="list-style-type: none"> Yr 12 Mystery Day – 9.30am – 4.30pm Yr 12 Graduation Practice – 8.30am – 9.30am
22 September	<ul style="list-style-type: none"> Yr 12 Graduation – 10.00am
23 September	<ul style="list-style-type: none"> Gold Award Excursion – Ms Lever Grand Final of Speaking Competition

Week 1A

10 October	<ul style="list-style-type: none"> School term commences
12 – 14 October	<ul style="list-style-type: none"> Yr 9 Camp
12 October	<ul style="list-style-type: none"> Student vaccinations
13 October – 4 November	<ul style="list-style-type: none"> HSC Exams

Week 2B

17 October – 4 November	<ul style="list-style-type: none"> HSC Exams
18 October	<ul style="list-style-type: none"> Yr 12 2017 HSC Information/Launch Evening

IMPORTANT MESSAGES

LATE ARRIVAL – CHANGE OF PROCEDURES

Up until 9.15am go to the side window of the Library between 'A' block and the Library block. One of the Office Staff will record your information and give you a late slip to get into class. After 9.15am report to the front office. Arriving late 3 times **without a note from parent/guardian** will result in parents being contacted by the school and consequences will apply.

SCHOOL FEES

Invoices for school fees will be sent to parents/guardians by mail during Week 5 of this term.

The fridge magnet calendar with 2016 important school dates will also be included.

UPDATING STUDENT DETAILS

If you change your address, phone number, including mobile number, or other contact details could you please let the school know as soon as possible.

PRIVATE PERSONAL PROPERTY

Personal property which is brought to school is the sole responsibility of the individual. The school is not insured to cover loss or damage.

PARKING IN SCHOOL ZONES

Heavy fines are imposed for illegal dropping off or picking up students in school zone hours. The school car park is for staff parking only and is not to be used for dropping off or picking up students.

RIDING A BIKE TO SCHOOL

Students who ride a bike to school are required by law to wear a helmet.

STUDENT ABSENCES

Students must bring a note to explain their absences. A green 'Absence Book' is available from the front office. Unexplained absences will appear on the student's report.

FINANCIAL ASSISTANCE

Parents experiencing financial difficulties can apply for support through the Student Assistance Scheme. Funds are available to help with subject fees, school uniform and books. All enquiries through the front office.



Transport
for NSW

School Excursion Travel

Opal Ticketing Update

School group travel on Opal network

From 1 August 2016 all customers travelling inside the Opal network will need a valid Opal card or Opal single trip ticket. This will change how you plan your school excursion travel. Make sure you include ticketing and travel arrangements in your planning.

Opal ticketing options

All students and adults will need a valid Opal card or Opal single trip ticket. For students this will be a Child/Youth Opal card or a Child/Youth Opal single trip ticket which can be bought on the day of travel. Single trip tickets are available at certain train stations and light rail stops. Adults will need to travel with an Adult Opal card or an Adult Opal single trip ticket which can be bought on the day of travel. Adult and Child/Youth Opal single bus tickets are available on non-prepay buses.

Schools will need to decide well in advance how they want to manage this. Options include:

- Students use their own Child/Youth Opal card.
Child/Youth Opal card is used by children/ youth for travel. Please note: parents/ guardians should ensure they have enough credit on the Child/Youth Opal card to cover the travel. School Opal cards are valid for trips to and from a student's school and home. They are not valid for travel on school excursions, or for school excursion travel.
- Schools manage the Child/Youth Opal cards on behalf of their students.
These can be registered by the school with Opal. Registering the cards with Opal will enable the school to manage the credit amount, preserve the balance on any lost cards, and request replacement cards.
- Purchase tickets on day of travel.
Consider this option as a last resort. Schools will need sufficient cash or a credit card, and will need to purchase individual tickets for each person travelling on the day of travel. Please note Opal single trip tickets are only available at certain train stations, wharves and light rail stops. Opal single bus tickets are available on non-prepay buses.

School Opal cards are valid for trips to and from a student's school and home. They are not valid for travel on school excursions, or for school excursion travel.

Payment options

- Cheques are no longer accepted for payment. Schools will need to use a credit card or cash.

More information on school excursion travel

- go to opal.com.au and follow the navigation path below



Home > About Opal > Opal for school students > Opal for school excursions

Transport for NSW Tel: 8202 2200 Fax: 8202 2209
18 Lee Street, Chippendale NSW 2008 | PO Box K659, Haymarket NSW 1240

Page 1 of 1



Year 12 – DER Laptops

In previous year's students were allowed to keep their laptop but this changed for the last roll out of computers. Students will need to return their laptop and charger to the school before or on sign out day. Students who fail to return their laptop will be issued with an invoice for the cost to replace this device. This is a mandatory part of the Year 12 sign out procedure.

Mr. Baldwin & Mr. Morrow

Tournament of Minds

Tournament of Minds is a problem solving program for teams of students from both primary and secondary years. They are required to solve demanding, open-ended challenges from one of the following disciplines:

- Science Technology
- Engineering Mathematics
- Social Sciences
- Language Literature



Tournament of Minds is an opportunity for students with a passion for learning and problem solving to demonstrate their skills and talents in an exciting, vibrant and public way.

This year, Warilla High School has entered two (2) mixed Year 7 & 8 teams into the Regional competition.



Our two teams have been working on their **Long Term Challenge** every Wednesday afternoon at school from 3pm-5pm, for six weeks without assistance from teachers, parents or peers. They have been exploring possibilities and experimenting with ideas as they develop a creative and original way to communicate their solution to others, working within predefined parameters such as limited materials, complex challenge criteria and the deadline of Tournament Day.

"Team MIZBIC" decided to work on a Language Literature challenge

"Team Control" worked on the Science/Technology challenge

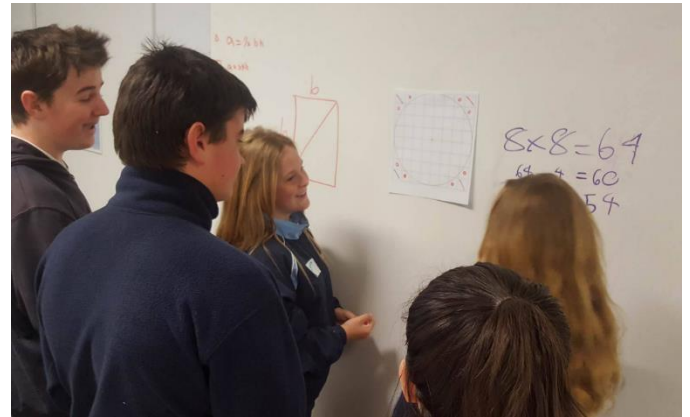
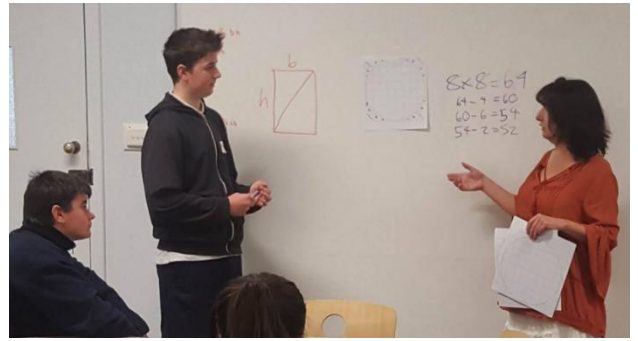
On Sunday 21st August, both teams participated in Tournament Day, where they presented their Long Term Challenge to judges, as well as an unseen **Spontaneous Challenge**. Both teams demonstrated rapid interchanging of ideas, the ability to think creatively and well developed group cooperation skills and should be proud of their efforts.



A massive thank you to our facilitator, Cass King who provided the students with fantastic feedback and guided the teams through the requirements of the Tournament.

Working Like a Mathematician

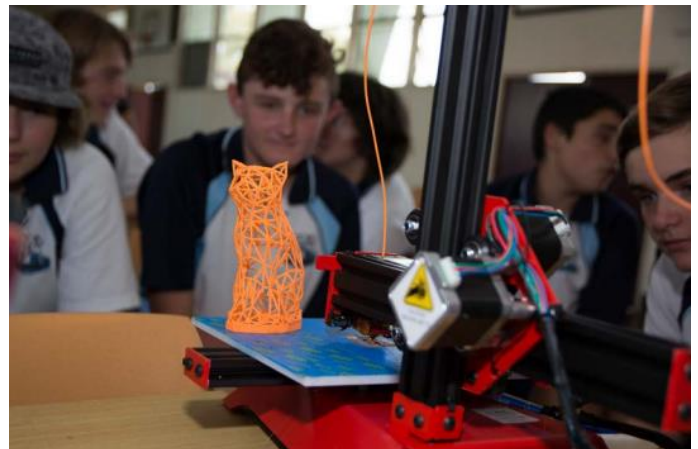
In the last few weeks, a number of our students have participated in the *Working Like a Mathematician* program at Illawarra Sports High School and the University of Wollongong. Year 9 Mathematics, Year 8 Core Skills and Year 9 Engineering students were presented with a new way of problem solving and learning. Students were provided with a range of scenarios that required them to work collaboratively, think critically and make their thinking visible on the whiteboards. Research conducted by UOW, has revealed that this type of learning increases student thinking, engagement and completion of the task. This partnership with the University of Wollongong IMSITE project is set to continue, with University academics, delivering a Professional Learning session for all Warilla High School teachers in the Collaborative Corner of our library at the end of this month.



STEM Roadshow

The University of Wollongong STEM Roadshow is visiting Warilla High School on Friday 16th September (Week 9). Any student from Year 7-10 who is interested in Science, Technology, Engineering or Maths has the opportunity to attend the following 3hr “hands-on” workshop at no cost.

- 3D Printing
- Drones
- Timber beam building and testing
- Water storage tank building and testing



- The making and testing of bottle rockets
- Driving an open-wheeler racer driving simulator
- Extraction of the genome of strawberries
- Radioactive isotope half-life

Students are able to sign up to attend the Roadshow by seeing Mrs Pettit in B3

*Head Teacher Teaching and Learning
Mrs Pettit*



Positive Behaviour for Learning (PBL)

Youth Voice

The PBL Student Team have been working busily this year to promote positive behaviour for learning within Warilla High School. In Week 9 of Term 2 we held a sausage sizzle to raise funds for some lounge chairs in the library. This was the team's first fundraiser and they gained valuable experience in teamwork, organisational skills and meeting timeframes. We would like to sincerely thank the Denny Foundation for their support in donating bread for both events.

Earlier in the year the team worked on creating a workshop to be presented to the school during a wet weather sport lesson. The lesson included a short film about litter in the school created by the students, edited by Jai Lee of Year 9, and an online video clip that was also about litter. The lesson was presented on Thursday, 4 August, and received positive feedback from both staff and students.



The Warilla Winners draw has continued this year with a change to the way that the prizes are drawn. This change was made after receiving feedback from students. Each fortnight a different prize is drawn for each of the 6 year groups to give students that chance to win a variety of prizes including: A \$5 Canteen voucher, \$10 Canteen voucher, \$15 movie ticket, \$30 iTunes or movie gift card, and two prizes of 10 merits.

Overall, the team have made positive contributions to Warilla High School and are to be commended on their efforts.

*Ms Ritchie
Youth Voice Co-Ordinator*

Term 3 PBL Lessons

Our focus this semester during our PBL lessons has been on KNOWLEDGE. Below is an example of the type of lessons that have been presented by staff to students during these lessons.

- **AIM: Meeting deadlines and understand how BOSTES works**
- **CATCHPHRASE:**
- **Specific Feedback:**

Lesson: The aim of this lesson is to understand the concept of meeting deadlines and know how BOSTES works.

PowerPoint: Meeting deadlines & BOSTES

Video:


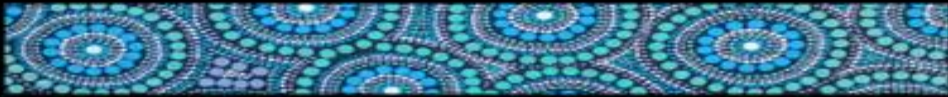
Class Discussion: Refer to PowerPoint and 'RoSA Extra Facts'

Remind students of catchphrases – Be the best you can

Hand out Warilla winners to students who have been on task, (*looking, listening and learning*).

The following slides were part of the PowerPoint used as part of the above lesson.

What does BOSTES stand for?
It stands for the Board of Studies, Teaching and Educational Standards in NSW.
It brings together all things required for both students and teachers for their work and study for Years 9 – 12.
If a document has BOSTES on the heading it is important.


When do your results start being recorded by the Board of Studies?
From the start of Year 9 your results are kept and recorded by the Board of Studies.

Why does this matter?
This means that your results from Year 9 onwards will be on your final results on a certificate called a Record of Achievement (ROSA).



Other Lessons taught this term have been on:

Making Choices	Work Ready	Reflection / Self Direction
Meeting Deadlines	Bostes	Higher Order Thinking
Differentiation	Predictable	Creative Critical Thinking
Problem Solving	Value Education	Communication/Collaboration

On behalf of the school community I would like to thank the staff skilling team who commit so much time in the research and preparation of the lesson.

Mrs Unicomb
PBL co-ordinator

Seek knowledge

Our School's Core Values:

Care for your environment
Embrace honesty
Respect others and value yourself
Seek knowledge

W: <http://www.warilla-h.schools.nsw.edu.au> FB: [/WarillaHigh](https://www.facebook.com/WarillaHigh)

Page 10

CAPA (Creative and Performing Arts)

DRAMA SHOWCASE PERFORMANCE EVENING

On Wednesday the 10th August, the very talented group of Year 12 Drama students showcased their HSC performances and major works to an audience of highly enthused family and friends. The evening included two group performances and three monologues, as well as a collection of scriptwriting major works and a highly inspirational video drama. It was a wonderful evening designed to showcase what the students have been working toward during their HSC Year. We wish the year 12 students success for their HSC Performance Examinations taking place this term.

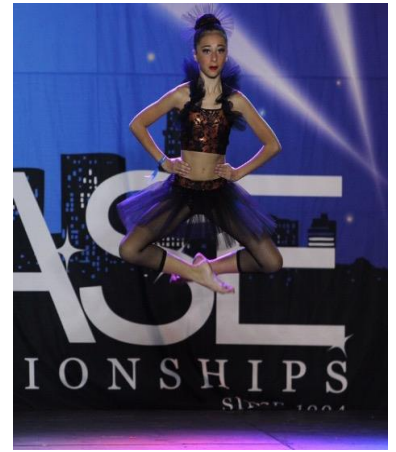


CAPA SHOWCASE

An evening full of singing, dancing, acting and rock and roll took place in the hall on Wednesday the 27th July. We would like to acknowledge the fantastic student talent in the field of Creative and Performing Arts. As well as highly entertaining performances, a collection of visual art and photography work was displayed. Parents and staff who attended were extremely impressed by the high standard of the students involved. We look forward to many more CAPA Showcase events in the future!

School Spectacular

Congratulations to Brooke Spiteri who is one of only 16 students from the Illawarra to be chosen to dance at the 2016 School Spectacular in Sydney. The 2016 Schools Spectacular will feature over 5,000 singers, dancers and musicians representing more than 500 NSW public schools from across the state. This is an outstanding result for a student who is currently in Year 7. The Warilla High School community wishes Brooke all the best with her rehearsal schedule and performances.

**NAIDOC ART RESULT**

Congratulations to Lauren who was placed equal first in the NAIDOC Week Art Competition run by the Lake Illawarra Local Area Police Command.

Lauren's Artwork was an interpretation of reconciliation in today's society and will be featured on the sleeve of the Lake Illawarra LAC Active Citizens Project shirt for 2016.

Once again I congratulate all students on their participation in the competition and I look forward to presenting Lauren with her shirt in the coming weeks.

Mrs K. Bowden.

**CAPA HSC Students**

Congratulations to our Visual Arts, Photography and Drama students who have submitted their major projects and completed their performances.

Mrs Unicom





20 % OFF SALE



- ❖ SHOP STOCK ONLY
- ❖ NO EXCHANGES
- ❖ NO REFUNDS
- ❖ NO RAIN CHECKS



SALE DATES

WED 14th SEPTEMBER - 12PM-5PM
 FRIDAY 16th SEPTEMBER- 8AM -1PM
 WEDNESDAY 21st SEPTEMBER
 12PM-5PM
 FRIDAY 23rd SEPTEMBER- 8AM-1PM



20 % OFF SALE SENIOR UNIFORMS



- ❖ SHOP STOCK ONLY
- ❖ NO EXCHANGES
- ❖ NO REFUNDS
- ❖ NO RAIN CHECKS



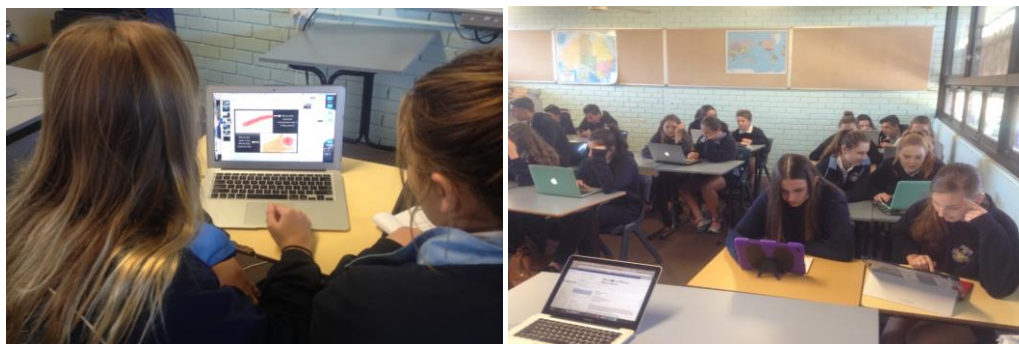
SALE DATES

WED 14th SEPTEMBER - 12PM-5PM
 FRIDAY 16th SEPTEMBER- 8AM -1PM
 WEDNESDAY 21st SEPTEMBER
 12PM-5PM
 FRIDAY 23rd SEPTEMBER- 8AM-1PM

BYOD Update

Use in the classroom

First of all, I would just like to congratulate all of the parents and students who have embraced the concept of BYOD and are bringing their devices to school every day. Although it is still too early to make judgement on the impact this technology will have on our students overall academic results, there is no argument against the fact that it will dramatically increase the amount of information and knowledge they will have access to in the classroom. And as technology becomes an ever-increasing part of the workforce, it also enables us to equip students with the type of skills that will increase their likelihood of employment. A fine example of this is demonstrated in the current Year 11 Business Studies classes here at Warilla High School. Prior to the implementation of the BYOD program students in these classes were learning about the business world predominately through textbooks. As a result of the BYOD program, students are now not only learning the theory, but they are also designing their own business websites, creating advertising commercials and have access to advice from successful entrepreneurs' at their fingertips.



Financial Support

As mentioned previously, we recognise that just like uniforms, supplies, and extracurricular activities, a device for student use represents a significant investment for families. In response to this we will continue to offer a range of support options for those families who are unable to meet these expectations due to financial hardship. Please ask students to come and see Mr Jones in the HSIE staffroom for an application form if financial support is required with regards to purchasing a device. In order to enable future-focused 21st Century Learning programs to continue to be implemented at Warilla High School it is very important that all students actively participate in the BYOD program.

Recommended Devices

We will continue to provide recommendations on suitable devices based on consultation with local providers as well as observation of student use of certain devices in the classroom. It is important to remember that we are not suggesting that these are the best devices, however they meet all of the requirements to be used within the classroom and are placed in the lower pricing point.

One such device we have observed a large number of students using recently is the HP Stream Laptop (see details below). As teachers who use laptops extensively in the classroom, students who are using these particular devices have been able to participate in every activity we have set that requires the use of a device. They can be purchased at a range of local providers and at somewhere around the \$290 price point, are certainly a more affordable option than some of the other devices on the market.

<https://www.jbhifi.com.au/computers-tablets/laptops/hp/hp-stream-11-r007tu-11-6-laptop/842537/>



HP Stream

Key Features

Intel® Celeron® N3050 Processor (1.6GHz, 2MB L2 Cache)
11.6-inch diagonal HD AntiGlare WLED-backlit Display (1366x768)
2GB RAM/32GB eMMC Storage
UMA Shared Graphics
1 x HDMI
2 x USB 2.0 Ports
Micro SD Card Reader
Webcam
Bluetooth 802.11ac Wi-Fi

It is also important that laptops brought by students are suitable for use at school. Please be aware that some older laptops and Android devices will not work on the school's 5 GHz wireless network. Details of the minimum specifications and the types of devices suitable for use in the school environment are available on the following website;

- <http://warillahighbyod.weebly.com/>

Students will also be able to access Microsoft Office and some Adobe software free of charge to place on their device. Please DO NOT purchase these software packages.

Staff Training

As part of our commitment to the implementation of 21st Century Learning here at Warilla High School, we have recently introduced Professional Learning Communities for all staff members to participate in. One of these communities is the Google Apps and Technology group. Through this group, teachers will continue to receive extensive training in the use of technology to engage students within the learning environment. As teachers continue to develop their skills over the coming months we will continue to see an increase in the use of devices within the classroom.

We appreciate your ongoing support and participation as we continue with this transition. We will continue to keep you informed.

Ben Spooner / Barry Jones
Computer Co-ordinators

OPAL Cards




Almost 340,000 school students are now travelling to and from school using their new School Opal cards.

Students have embraced travelling with Opal, completing over 370,000 journeys each day. And most students are remembering to tap on and off each trip, with almost 80% of journeys taken with School Opal cards being successfully completed.

As always with the start of a new school year, some students have needed to update their operator selection as they have moved home, school or campus. We've successfully updated 4,500 School Opal cards with the correct operator to help students travel. If a student gets a "Card not valid – 65" message, they are not approved for that service and should go online at transportnsw.info/school-students to request an update of operator(s).

With most school holidays starting on 11 April, it is important to remember that School Opal cards, including School Term Bus Passes, will not be enabled for travel on weekends or during school holidays. School Opal cards will be reactivated when term two starts on 26 April.

Below are some reason codes students may see on Opal card readers if they use their School Opal card during these times.

	The card is not approved for this mode or operator
	The card is not valid for this date, e.g. is being used outside school term
	The card is not valid for the current day type, e.g. is being used on weekends

Customers who currently have a School Term Bus Pass, that is due to expire after term one, will also receive an email notification from Transport for NSW reminding them to renew their pass. These customers simply need to go online at

transportnsw.info/school-students and apply for a new School Term Bus Pass, and their existing School Opal card will be updated if the application is submitted and approved prior to the start of Term 2.

How you can help

- Endorse any new School Opal card applications and send these to Transport for NSW.
- Remind students to travel with a Child/Youth Opal card for travel on weekends and school holidays.
- Remind students to tap on and off every time.

*Thank you for your support.
The Concessions Team*

Make Online Payments (POP)

Is now possible for parents to make online payments to the school for amounts owing for students, via a secure payment page hosted by Westpac. Payments can be made using either a Visa or MasterCard credit/debit card. The payment page is accessed from the front page of the [schools website](#) by selecting \$ Make a payment

Items that can be paid include voluntary school contributions, subject contributions, excursions, sales to students and creative and practical arts activities (these include band, drama and dance). There is also a category called “other”, this would cover items not covered in the previous heading. ‘Other’ can be used to make a complete payment of a school invoice.

When you access the \$ Make a payment you must enter:

- the students name, and
- class and reference number OR
- the students name, and
- Date of birth.

These details are entered each time you make a payment, as student information is not held within the payment system.

This is a secure payment system hosted by Westpac to ensure that your credit/debit card details are captured in a secure manner and these details are not passed back to the school.

You have the ability to check and change any details of the payment before the payment is processed. Receipts can be emailed and/or printed.

Details of the payments are passed daily to the school where they will be receipted against your child’s account. As a receipt has been issued from the payment page a further receipt will not be issued by the school.

For any enquiries regarding the Online Payment process please contact the office staff on 02 4296 3055 or alternately email; warilla-h.school@det.nsw.edu.au

The Office Staff

Warilla High School Attendance

During the last two terms, a growing number of students have been coming late to school, that is after the bell rings for the commencement of the school day, without a note from a parent or caregiver.

Warilla High School is required under the **Education Act 2009**, to record and report on all absences (whole day or partial day absences). This includes students who are “a few minutes late”. Parents are responsible under the act to explain the absences of their children from school with either a note or a verbal notification in person or on the telephone.

Listed below is a table of justified and unjustified absences as determined by the NSW Department of Education.

Justified Reasons	Unjustified Reasons
<ul style="list-style-type: none"> • Doctor's/dentist appointment – must provide evidence, such as a doctor's certificate or letter. • Appointment with other health care professional or similar service – must provide evidence, such as an appointment card or letter. • Special family circumstances – note/verbal explanation must be provided. • Bus delayed – school will check to verify. • Interview with Principal, Deputy Principal, Counsellor or other school personnel – staff involved must inform the front office. 	<ul style="list-style-type: none"> • Sleeping in / alarm not working • Missed the bus • Traffic / road works • Walked to school • Waiting for parent • Minding sibling • Shopping • Other similar reasons

Please Note: A note from a parent or verbal explanation from parent who drops student at school for any reason listed above as “unjustified” **DOES NOT** make the reason “justified”.

Any late arrivals to school without this notification will be recorded as a partial absence and **will be reported** as an ‘*Unexplained Partial Absence*’ on the student's report card and on the official record of student attendance. In addition, any student who is late without a justified reason will be placed on detention by a member of the Senior Executive.

Late Arrival Change of Procedures – Students arriving late between 8:30 a.m. and 9:15 a.m. are to report to the side window of the library. Any late arrivals after 9:15 a.m. are to report to the front office. Students who are late should bring a note from a parent or caregiver.

Your cooperation with our obligations under the DEC Attendance Guidelines is greatly appreciated.

Mr Ben Spooner

Relieving HT Student Engagement and Retention



Education &
Communities

Compulsory School Attendance

Information for parents

Education for your child is important and regular attendance at school is essential for your child to achieve their educational best and increase their career and life options. NSW public schools work in partnership with parents to encourage and support regular attendance of children and young people. When your child attends school every day, learning becomes easier and your child will build and maintain friendships with other children.

What are my legal responsibilities?

Education in New South Wales is compulsory for all children between the ages of six years and below the minimum school leaving age. The *Education Act 1990* requires that parents ensure their children of compulsory school age are enrolled at, and regularly attend school, or, are registered with the Board of Studies, Teaching and Educational Standards for homeschooling.

Once enrolled, children are required to attend school each day it is open for students.

The importance of arriving on time

Arriving at school and class on time:

- Ensures that students do not miss out on important learning activities scheduled early in the day
- Helps students learn the importance of punctuality and routine
- Give students time to greet their friends before class
- Reduces classroom disruption

Lateness is recorded as a partial absence and must be explained by parents.

What if my child has to be away from school?

On occasion, your child may need to be absent from school. Justified reasons for student absences may include:

- being sick, or having an infectious disease
- having an unavoidable medical appointment
- being required to attend a recognised religious holiday
- exceptional or urgent family circumstance (e.g. attending a funeral)

Following an absence from school you must ensure that within 7 days you provide your child's school with a verbal or written explanation for the absence. However, if the school has not received an explanation from you within 2 days, the school may contact you to discuss the absence.

Principals may decline to accept an explanation that you have provided if they do not believe the absence is in the best interest of your child. In these circumstances your child's absence would be recorded as unjustified. When this happens the principal will discuss their decision with you and the reasons why.

Principals may request medical certificates or other documentation when frequent or long term absences are explained as being due to illness. Principals may also seek parental permission to speak with medical specialists to obtain information to collaboratively develop a health care plan to support your child. If the request is denied, the principal can record the absences as unjustified.

Travel

Families are encouraged to travel during school holidays. If travel during school term is necessary, discuss this with your child's school principal. An *Application for Extended Leave* may need to be completed. Absences relating to travel will be marked as leave on the roll and therefore contribute to your child's total absences for the year.

In some circumstances students may be eligible to enrol in distance education for travel periods over 50 school days. This should be discussed with your child's school principal.





**My child won't go to school.
What should I do?**

You should contact the principal as soon as possible to discuss the issue and ask for help. Strategies to help improve attendance may include a referral to the school's learning and support team or linking your child with appropriate support networks. The principal may seek further support from the Home School Liaison Program to develop an Attendance Improvement Plan.

What might happen if my child continues to have unacceptable absences?

It is important to understand that the Department of Education and Communities may be required to take further action where children of compulsory school age have recurring numbers of unexplained or unjustified absences from school.

Some of the following actions may be undertaken:

- Compulsory Schooling Conferences

You may be asked, along with your child, to attend a Compulsory Schooling Conference. The conference will help to identify the supports your child may need to have in place so they attend school regularly. The school, parents and agencies will work together to develop an agreed plan (known as Undertakings) to support your child's attendance at school.

- Application to the Children's Court – Compulsory Schooling Order

If your child's attendance at school remains unsatisfactory the Department

may apply to the Children's Court for a *Compulsory Schooling Order*. The Children's Court magistrate may order a Compulsory Schooling Conference to be convened.

- Prosecution in the Local Court

School and Department staff remain committed to working in partnership with you to address the issues which are preventing your child's full participation at school. In circumstances where a breach of compulsory schooling orders occurs further action may be taken against a parent in the Local Court. The result of court action can be the imposition of a community service order or a fine.

What age can my child leave school?

All New South Wales students must complete Year 10 or its equivalent. After Year 10, and up until they reach 17 years of age, there are a range of flexible options for students to [complete their schooling](#).

Working in Partnership

The Department of Education and Communities recognises that working collaboratively with students and their families is the best way to support the regular attendance of students at school.

We look forward to working in partnership with you to support your child to fulfil their life opportunities.

If a student misses as little as 8 days in a school term, by the end of primary school they'll have missed over a year of school.

Further information regarding school attendance can be obtained from the following websites:

Policy, information and brochures:

<http://www.schools.nsw.edu.au/goto/school/a-z/attendance.php>

The school leaving age:

<http://www.schools.nsw.edu.au/leaving-school/index.php>

Do you need an interpreter?

Interpreting services are available on request, including for the hearing impaired. The Telephone Interpreter Service is available 24 hours a day, seven days a week on 131 450. You will not be charged for this service.

For further advice and questions contact your educational services team

T 131 536

Learning and Engagement

Student Engagement & Interagency Partnerships

T 9244 5129

www.dec.nsw.gov.au

© February 2015

NSW Department of Education and Communities

Emergency Procedures

In a life threatening emergency, for FIRE, POLICE and AMBULANCE

DIAL 000

In **ALL CASES**, advise the Principal.

Exits

For your safety, make sure you know the location of your nearest exit.

Evacuation Alarm



CONTINUOUS RINGING OF BELL

Evacuation Procedures

When the evacuation alarm sounds:

- Evacuate the building and proceed to the assembly area identified below.
- Do not re-enter until advised to do so.

Lockdown Alarm



3 LONG, 2 SHORT BELL RINGS

Lockdown Procedures

When the lockdown alarm sounds:

- Move to the closest secure point and ring the office to alert them to your whereabouts.



- ★ Fire Hydrants
- ★ First Aid Kits
- ★ First Aid Room
- ★ Evacuation Point



Education & Communities
Public Schools NSW



WELCOME TO

Warilla High School

Safety Briefing

For Contractors

Visitors and Volunteers

The New South Wales Department of Education and Communities is committed to the occupational health and safety of employees, students, contractors and all other visitors.

For your safety and the safety of others, it is a condition of entry to this site that you take a few minutes to read this brochure.

Mandatory site requirements:

- All visitors are required to report to the main office on arrival.
- Observe all speed, parking and vehicular restrictions.
- Obey all safety signs and barricades.
- **Violent, threatening or other unacceptable behaviour is not tolerated on NSW Department of Education and Communities premises.**
- All contractors to have completed the [Safety procedures for engaging Department of Commerce contractors](#) OR [Safety procedures for engaging independent contractors](#)

- ❖ **Smoking** is not permitted on DEC premises.
- ❖ **Alcohol and Illegal Drugs** are not permitted on DEC premises.
- ❖ **Weapons**, including knives, are not permitted.
- ❖ **Dangerous Goods and Hazardous Substances**
Visitors and contractors intending to bring dangerous goods on site must declare these at the main office prior to entering the site.
- ❖ **All Injuries, incidents and hazards** must be reported to the main office.
- ❖ Injuries will be recorded in the *Register of Injuries*.
- ❖ **First Aid** treatment is available on site.
- ❖ **Other**
Add information about site specific issues here



All Department of Commerce contractors report to the principal or delegate to:

- indicate the location and duration of the job
- sign the school's Site Visit Log book
- advise the status of the job before leaving the site.

All non-Department of Commerce contractors must in addition:

- produce a copy of their safety management plan including use of personal protective equipment and controls for site specific hazards
- produce public liability insurance documentation before work is commenced
- complete a Prohibited Employment Declaration

I have complied with all WHS issues:

Signed: _____ Contractor

Contractor name: _____

Company: _____

Date: ____/____/____

Warilla High School

Uniform Shop Special Opening Hours

2017



January 2017

Monday	23rd. January	08:00AM - 02:00PM
Tuesday	24th. January	08:00AM - 02:00PM
Wednesday	25th. January	08:00AM - 02:00PM
Thursday	26th. January	CLOSED
Friday	27th. January	08:00AM - 04:00PM
Monday	30th. January	08:00AM - 04:00PM
Tuesday	31st. January	08:00AM - 04:00PM

February 2017

Wednesday	1st. February	08:00AM - 04:00PM
Thursday	2nd. February	08:00AM - 04:00PM
Friday	3rd. February	08:00AM - 01:00PM

THEN EVERY WEDNESDAY:

12:00pm - 05:00pm

FRIDAY:

08:00am - 01:00pm

UNIFORM ENQUIRES PLEASE PHONE: 0401 680 325

Purchase Online: daylightsportswear.com/warilla

PRICE LIST / ORDER FORM ON THE BACK

MASTERCARD VISA EFTPOS NOW AVAILABLE, CHEQUES NOT ACCEPTED. NO LAYBY.

**Daylight Sportswear Pty Ltd**

ABN 76 069 733 455

6 - 8 Lone Pine, Smeaton Grange NSW 2567

Tel: (02) 4648 1066 Fax: (02) 4647 0143

Email: daylight@daylightcorp.com

Warilla High School UNIFORM SHOP**Tax Invoice**

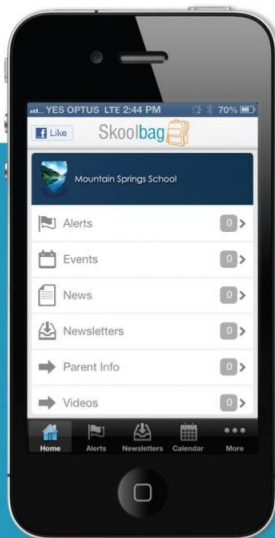
NAME: _____ YEAR: _____ DATE: _____ REC# _____

ITEM		PRICE	SIZE	QTY	TOTAL INCL GST
Girls	SNR Sky Blouse	28.00			
	Girls Navy Shorts	36.00			
	JNR Navy Skirt	40.00			
	SNR Tartan Skirt	48.00			
Boys	SNR Boys Sky Shirts	28.00			
	Boys Navy Shorts	36.00			
Unisex	Fleecy Jackets	39.00			
	JNR Polo	30.00			
Sports	Sport Jackets	55.00			
	Sports Shorts	25.00			
	Trackpants	37.00			
	Sports Polo	35.00			
Accessory	Navy Scarf	12.00			
	Boys Navy Tie	20.00			
	Girls Tie	10.00			

UNIFORM ENQUIRES PLEASE PHONE:0401 680 325

Purchase Online: daylightsportswear.com/warilla

MASTERCARD VISA EFTPOS NOW AVAILABLE, CHEQUES NOT ACCEPTED. NO LAYBY.



Skoolbag

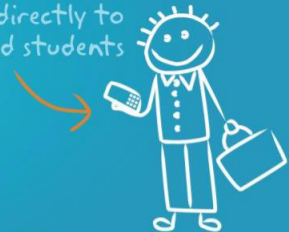
Smartphone school to parent communication



Skoolbag is a mobile App for your school to communicate directly to both parents and students. It works through both smart phones and smart devices (such as iPads and Android Tablets). Ideal for:

- > School, free push notification alerts
- > School events
- > School newsletters
- > School documents
- > School RSS feeds
- > School social media (Facebook, Twitter)

Skoolbag delivers school notices directly to parents and students



How to Install Warilla High Skoolbag On Your Smartphone!

iPhone/iPod & iPad Users

1. Click the "Apple App Store" icon on your device.
2. Type in Warilla High School in the search.
3. If iPhone/iPod, you will see our school appear, click "Get" then "Install"
4. When Installed click "Open"
5. Select "OK" to receive push notifications, when asked.



Android Users

You must first have signed up with a Google Account before installing the app.

1. Click the "Play Store" button on your Android Device
2. Click the magnifying glass icon at the top and type in Warilla High School.
3. Click Warilla High School when it appears in the search.
4. Click the "Install" button/
5. Click "Accept" for various permissions (please note, we don't modify any of your persona; data on your devices).
6. Click "Open" when installed.



Don't forget to like us on Facebook!  Like

Find out more at www.skoolbag.com.au

Skoolbag delivers school notices directly to parents and students



Community Notices



SURF LIFE SAVING
NEW SOUTH WALES

WARILLA BARRACK POINT SLSC



OPEN DAY

9am SUNDAY 16TH OCTOBER 2016

**Displays, Surf Rescue Demonstrations, Sausage Sizzle,
Games and much more.**

7 Osborne Parade, Warilla NSW 2528

www.warillasurf.org.au

