



Keross Avenue, Barrack Heights, NSW 2528

6 November 2017 | Issue 1 – Term 4 – Week 5

T: 02 42963055 F: 02 42972817 E: [warilla-h.school@det.nsw.edu.au](mailto:warilla-h.school@det.nsw.edu.au) FB: [/WarillaHigh](https://www.facebook.com/WarillaHigh) W: <http://www.warilla-h.schools.nsw.edu.au>

## Principal's Message

This term is dominated by the HSC and our preparations for the 2018 school year. Our Year 12 students have left exam rooms in a very positive frame of mind and with a quiet confidence about doing well in their respective courses. I am optimistic that this confidence is well placed, something that will be confirmed when results are released in mid-December.

Of course, sitting behind these results are committed and dedicated staff who are among the best I have had the pleasure of working within my time with the DOE. We will welcome new staff in 2018 into the English, Maths, Science, TAS, CAPA and HSIE faculties, as well as those taking up substantive senior leadership positions as Deputy Principal and Head Teacher Administration, respectively. Additionally, our executive roster will also see RAM funded appointments to HT positions in Teaching and Learning, and Learning and Support. These staff will be crucial in maintaining the outstanding results currently being achieved across all curriculum areas.

The DOE Staffing unit has advised me that our new Deputy Principal is Mr Martin Ind, who currently holds that position at Moruya HS. I am sure Mr Ind will make a very positive contribution, but he has a hard act to follow in replacing Mrs Raison!

**I would like to publicly acknowledge the outstanding contribution Mrs Raison has made to Warilla High School and its wider community over several years. Every area of the school's operation- from teaching and learning, assessment and reporting, to discipline and well-being structures have been influenced by her insights and intellect. I cannot overstate Jenni's contribution to our success, and those parents who have dealt with her would understand the sensitivity, empathy and compassion that she applies to every situation. As a Deputy Principal, she has been loyal, critically constructive and always ready to go beyond the norm to ensure every student has the very best opportunities to learn in an environment of high expectations and quality teaching. I often describe Jenni as a Principal masquerading as a DP! We will miss Jenni immensely, but I understand a time comes in every career where a new challenge beckons, and I know Jenni will provide the same infectious energy to her new role at Bomaderry HS as she has done throughout her illustrious career. Good luck my dear friend!**

While I am offering accolades, can I also acknowledge the tremendous work done by Mr Peter Hales as Acting DP. This position will end this year and Peter will revert to his substantive position as HT HSIE. Peter's work in the demanding Stage 4 DOP role has been a revelation, and I am sure substantive higher office awaits in the not-to-distant future. Well done!

Upon reflection, we are indeed lucky to have the leadership capacity that exists in this school with a group of highly talented people ready to take on the demands of leading a faculty or non-curriculum based area, and even the school! These staff include Mr Barry Jones, Ms Mel Lever, Mr Ernie Orth, Mr Steve Kershaw, Ms Di masters, Mr Matt Reid, Ms Michelle Brook, and Ms Janine Neden.

We will certainly need this consolidated experience as we anticipate 2018 with an enrolment of over 1290 students!

**As always, I look forward to seeing you all at our P&C meetings on the second Tuesday of each month commencing at 6 pm in the Library.**

*With my kind regards, Mr Hambly, Principal*



## Deputies Report

The year is flying by and at this stage, our Year 12 students are busy with their final HSC exams. Talking to students as they have been leaving the exams they have been generally quite happy but we will not know the results until the end of the school year. It is an exciting stage of their lives as they are offered employment or various courses. We will keep you posted as to how they go.

Warilla High School has a mobile phone policy and the students have been reminded of it at Year assemblies. The school's stance is that during school hours student phones are "Off and Away". If a parent/carer needs to get in contact with their child they are requested to do so through the school number and a message will be sent to them immediately. Please do not ring them during class time, as they will have their phone taken off them and it will not be returned until the end of the day. Obviously, if a teacher wants students to use the internet for a class activity then, of course, it is OK if they use their phone, or a tablet, to complete the task, and on its completion, it is to be switched off and returned to their bag. With our phone policy, we are teaching our students skills for life. Very recently a visitor to the school and an employer said they are so against the use of phones during work time in the building industry that after one warning employees can be sacked for violating this code. He even gave an example of a death at a building site because the person wasn't paying attention while using their phone. We ask parents and carers to support us by communicating with their child through the office during school hours. We would also add to help our students mature and work on their independence it is good to encourage students to socialise with their friends rather than being on the phone to home.

### Phones



Recently a letter was sent home to some parents of Year 10 students. These were students who had received a Letter about N Award warnings. The reason we send letters of this type is to keep you informed as to what is happening and our expectations at school. If a student doesn't hand in assessment tasks we give them another chance to clear the matter, but for zero marks. If students have failed to do that we have sent you a letter. We want to work as a team with parents and the student and get these outstanding N warnings cleared, so as to not put their Record of School Achievement (ROSA) in jeopardy. Thank you to the many parents who have called recently about these letters and it is great to see we are clearing these issues. We want all of our students to do their personal best in their ROSA and we appreciate parental support for us to achieve this.

### ***Deputy Principals***

***Ms Brook, Mr Hales and Mr Kershaw***

**Week 5A**

10 Nov	• Remembrance Assembly
--------	------------------------

**Week 6B**

14 Nov	• Gold Award Assembly
15-17 Nov	• Year 8 CAP Camp

**Week 7A**

21 Nov	• Year 6 into 7 Parent Information Evening
22-24 Nov	• Year 7 Camp

**Week 8B**

28 Nov	• Year 8 UOW Bootcamp
29 Nov	• Formal Assembly • 12 ENS2 – “The Writers Room”
1 Dec	• 7 CAP A & B to Sydney

**Week 9A**

5 Dec	• Presentation Night
6-8 Dec	• Year 8 CAP Camp
8 Dec	• CAPA Showcase

**Week 10B**

11 Dec	• Support Unit – Jamberoo Rec Park
12 Dec	• Support Unit – Lake Foreshores
13 Dec	• Support Unit – Hoyts Warrawong
14 Dec	• HSC Results Released
15 Dec	• ATA Results Released • Year 12 BBQ • Last Day for Students for Term 4

**IMPORTANT MESSAGES****LATE ARRIVAL – CHANGE OF PROCEDURES**

Up until 9.15am go to the side window of the Library between ‘A’ block and the Library block. One of the Office Staff will record your information and give you a late slip to get into class. After 9.15am report to the front office. Arriving late 3 times **without a note from parent/guardian** will result in parents being contacted by the school and consequences will apply.

**SCHOOL FEES**

Invoices for school fees will be sent to parents/guardians by mail during Week 5 of Term 1.

The fridge magnet calendar with 2017 important school dates will also be included.

**UPDATING STUDENT DETAILS**

If you change your address, phone number, including mobile number, or other contact details could you please let the school know as soon as possible?

**PRIVATE PERSONAL PROPERTY**

Personal property which is brought to school is the sole responsibility of the individual. The school is not insured to cover loss or damage.

**PARKING IN SCHOOL ZONES**

Heavy fines are imposed for illegal dropping off or picking up students in school zone hours. The school car park is for staff parking only and is not to be used for dropping off or picking up students.

**RIDING A BIKE TO SCHOOL**

Students who ride a bike to school are required by law to wear a helmet.

**STUDENT ABSENCES**

Students must bring a note to explain their absences. A green ‘Absence Book’ is available from the front office. Unexplained absences will appear on the student’s report.

**FINANCIAL ASSISTANCE**

Parents experiencing financial difficulties can apply for support through the Student Assistance Scheme. Funds are available to help with subject fees, school uniform and books. All enquiries through the front office.

## Mobile Phones-An Issue

Dear Parents/Care-Providers,

I am writing to enlist your support. There has been a growing tendency for students to use mobile phones during class.

This is clearly a breach of our stated policy (see below).

Staff are being increasingly frustrated when students who are asked to put their phones away seek to argue with teachers.

Such blatant disobedience upsets lessons and simply won't be tolerated.

Can you please reinforce with your child that devices they bring to school are not to be used in class unless teachers specifically request they do so.

It is to the point where quite serious consequences will ensue for those students who continue to defy this policy.

I thank you in anticipation of your cooperation.

**Mr Hambly**

**Principal**

### WARILLA HIGH SCHOOL MOBILE PHONE, IPOD AND ELECTRONIC DEVICES POLICY

*It is strongly recommended that students do not bring mobile phones, iPods or other electronic devices to school unless they are specifically requested by their teacher for learning experiences.*

- **Mobile phones, iPods and electronic devices must be switched off and out of sight during lessons and change of class. Earphones are to be removed from ears during all lessons.**
- Mobiles are only to be used during lunch and recess breaks and only for **legitimate, legal communication** purposes. A student **cannot use the camera in a camera phone without the permission of the student/person** being photographed.
- Students who have devices switched on in class (including phones that ring, vibrate or indicate a text message, iPods and other electronic devices) will be dealt with via the school's discipline system.
- Continued use of a phone, iPod or other electronic device will result in a suspension for continued disobedience.
- Students who bring phones or other equipment to school do so entirely at their **own risk**. The school will not be responsible for lost or stolen phones, iPods or other electronic entertainment devices.

**NB: At no time should a student use their mobile phone during school hours to contact a parent and arrange to be picked up, even if they are sick. These arrangements can only be made through the front office.**



## HSC Disability Support Provisions (special provisions) 2018 Applications

NESA offers practical support to students sitting the HSC if they have a recognised disability.

Submission of applications to access disability support provisions will generally close at the end of term 1, the year your child sits the HSC exams. NESA will consider late applications.

NESA requires supporting evidence to be submitted with each application. Often this evidence is in the form of current diagnosis from medical providers including doctors, as well as allied health professionals such as physiotherapists, psychologists, occupational therapists, behavioural optometrists

Support offered depends on the disability, but can include separate small group supervision, reader, writer, extra time, stand & stretch, rest breaks, diabetic provisions.

It is possible for NESA to permit nonstandard support if warranted.

If you are interested in finding out more regarding the process of applying for Disability Support Provisions for the 2018 HSC, please contact Ros Gaynor Learning and Support Teacher

**Ros Gaynor**  
**Learning and Support Teacher**

## Warilla High School Bike Helmet Safety Policy

While riding a bicycle it is required by law to wear an (Australian Standard Approved) helmet securely fitted and fastened to your head.

Warilla High School has an obligation to enforce this law for the safety of their students when riding a bicycle to or from school.

Governed by Work Health & Safety, Duty of Care and NSW Law, Warilla High School cannot allow a student to ride a bicycle to or from the school premises without a helmet.

Therefore, if a student arrives at school without wearing a helmet then the school will be required to secure that bicycle until that student presents themselves with an approved safety helmet or the student's parents come and retrieve the bike.

## Caltex Service Station Concern...

Dear Parent/Care-Provider,

I am writing to bring to your attention a concern expressed to me by the proprietor of the Caltex Service Station on Shellharbour Road; some 100 metres from the school. He has asked me to remind parents that the service station is not a public parking area, especially around school drop-off and pick-up times. He alleges that some parents are actually parking in the petrol bowser driveways, preventing customers from using the facility! I have assured him that I would bring this situation to your attention and that I was sure of your support in this request.

I thank you in anticipation of your cooperation.

**Yours sincerely,**  
**Mr Hambly**  
**Principal**



## Late Arrival to School

During the last two terms, a growing number of students have been coming late to school, that is after the bell rings for the end of roll call, without a note from a parent or caregiver.

Warilla High School is required under the **Education Act 2009**, to record and report on all absences, be the whole day, or partial day absences. This includes students that are only five (5) minutes late to school. **Parents are responsible** under the act to explain the absences of their children from school with either a note or a verbal notification in person or on the telephone.

Any late arrivals to school without this notification will be recorded as a partial absence and **will be reported** as an '**Unexplained Partial Absence**' on the students report card and on the official record of student attendance.

Please discuss this matter with your child, and reinforce the need to have a good record of attendance on their reports, for when they want to move into the part-time or permanent workforce.

If you have any questions regarding your child's whole day or part-time attendance patterns, please feel free to contact me at the school.

**Mr S Kershaw**

**Head Teacher Student Administration**

## The Importance of Regular School Attendance

The following chart highlights the impact of non-attendance over time. Viewed in this context, the implications of regular absenteeism are startling. The chart shows the cumulative effect of persistent non-attendance over the period of schooling from **Kindergarten to the end of Year 10**.

Days absent	Total days	Number of Terms	Number of years missed
1 day per week	440	8.2	2 years 1 term
1.5 days per week	660	12.3	3 years 1.5 terms
2 days per week	880	16.4	4 years 2 terms
3 days per week	1320	25	6 years 1terms
5 weeks per term	1100	22	5 years 2 terms
Average 5 days per term	220	4.5	1 year 1.5 terms
Average 10 days per term	440	9	2 years 3 terms

**Mr Kershaw**

**Head Teacher Student Administration**

## Applications for 2018 School Student Transport Scheme (SSTS) and Term Bus Pass (TBP) travel entitlements are now open.

In coming days students who hold an SSTS entitlement and are changing grade bands i.e. going from year 2 to 3 or year 6 to 7 and changing school, and students whose entitlement was approved under a medical condition will receive notification by email or post informing them of the pending expiry of their entitlement. TBP holders will also receive notification.

Students inquiring about pending cancellation should be advised to go online to <https://apps.transport.nsw.gov.au/ssts/updateDetails> to update details/make application for next year's entitlement.

The application needs to be made before 31 December 2017 to ensure their entitlement is updated and their current card is not cancelled. If the application is made after the expiry of their entitlement (31 December) the system will automatically cancel their card and a new one will need to be issued.

**Please note:** Students who are changing grade band and are remaining at the same school will not receive notification and do not need to reapply (the system now automatically validates a student's on-going eligibility if at the same school and going from infants to primary or primary to secondary). Where a student meets the new eligibility the system will automatically update their entitlement and card.

**Students in the Opal area applying for a SSTS or TBP entitlement for the first time will receive their card (posted to the nominated address) a week or two before the commencement of 2018 classes. Please let students know new cards for 2018 are not posted in 2017 or during the Christmas / New Year period.**

Students residing in Rural and Regional (R&R) areas are expected to receive their new travel pass at the commencement of the New School Year. **Note;** not all R&R operators issue passes (often in smaller communities where the student is known a pass is not issued).

## Warilla HS School Nurse

It's that time of year again! In NSW between November to January, usually between the hours of 12md and 6 pm, we are prone to having thunderstorms that bring with them Rye Grass pollen. Asthma and Allergy sufferers - such as seasonal allergic rhinitis, and pollen allergy-related conditions, are most at risk of experiencing problems, which can lead to severe medical emergencies.

Having an up-to-date **Asthma Plan from your GP** and retained at our High School enables the correct treatments and support for the student, staff and School Nurse to assist with immediate medical management.

**Ms Herman R.N.,  
Warilla HS School Nurse, Oct 2017**

### THUNDERSTORM ASTHMA AND ALLERGY

Current high pollen counts and the predicted thunderstorms can increase the risk of asthma. People who are known to suffer from asthma should carry their asthma puffer with them at all times and try to stay indoors with the windows and doors closed during the storm period. If you have breathing difficulties call 000 or go to your nearest hospital Emergency Department.

To receive an SMS alert when the pollen counts are high and thunderstorms are predicted, go to [www.csu.edu.au/asthma](http://www.csu.edu.au/asthma) and register for alerts.

Alerts are also sent from the Public Health smartphone App which can be downloaded free.

#### Thunderstorm Asthma

##### A Preventable Epidemic

Across the globe, thunderstorm-associated asthma epidemics have been documented by a peak in hospital admissions for respiratory symptoms where there is both a high level of airborne pollens and thunderstorm activity.

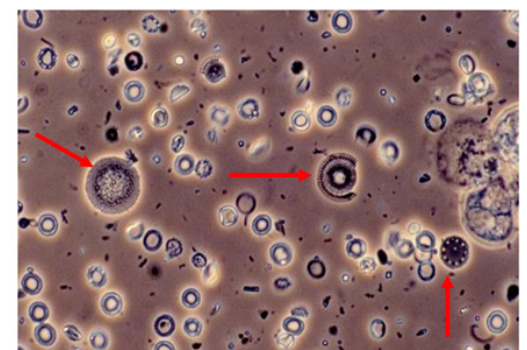
Grass pollens, dust and other allergens are blown ahead of the storm-front by the outflow of air, as seen in the photograph below of a typical storm front. (Source: [http://www.underthameso.com/blog/wp-content/uploads/2006/06/\\_DSC3836.jpg](http://www.underthameso.com/blog/wp-content/uploads/2006/06/_DSC3836.jpg))



#### The Role of Pollen

Moisture in the air causes the airborne pollen granules to swell under osmotic pressure and then to rupture into particles small enough to be breathed deep into the smaller airways within the lungs. Here, they can irritate the lining to cause inflammation, smooth muscle contraction in the airway wall and mucus production all of which obstructs airflow, producing an asthma attack.

Whilst thunderstorm-associated asthma epidemics have been reported in both metropolitan and rural areas, the greatest problem is where the grass pollen levels are high which covers much of rural NSW. In the Riverina, ryegrass has been identified as the major culprit associated with the thunderstorm asthma season from September through to November.



**POLLEN**

High pollen counts during the spring thunderstorm season are not the only trigger for asthma, but these conditions can trigger a severe response. Unfortunately, the onset of symptoms can be quite rapid, making the prompt administration of a reliever medication important. Microscope image of grass pollens. (<http://www.ndt-educational.org/images/artefatti28.jpg>)

#### Asthma Advice

If you have breathing difficulties during a thunderstorm you should take your reliever medication, but if symptoms persist - go straight to the Emergency Department of your local hospital.

Asthma Foundation NSW has found that a large proportion of people who have wheezing and sneezing or other breathing symptoms during the spring thunderstorm season do not realise they are sensitive to pollens. Also, they do not regard themselves as having asthma and therefore have not consulted their doctor for an Asthma Action Plan. Many people moving to country NSW may not have been previously exposed to this combination of environmental conditions and have never experienced the symptoms of asthma. This includes an increasingly transient population, including groups such as defence personnel, University students and itinerant workers.

There are several actions that can help protect against thunderstorm asthma. These include:

- avoiding outdoor activities during thunderstorms, particularly those involving physical activity when breathing is increased
- switching your car air-conditioner to recycle mode
- having a current Asthma Action Plan
- taking prescribed asthma medications as directed, including ready access to reliever medications

### Asthma Medications

- **Preventers** - make the airways less sensitive, reduce the inflammation and swelling inside the airways and dry up the mucus. It may take a few weeks to reach their optimal effect and usually need to be taken daily, even when feeling well
- **Relievers** - provide relief from asthma symptoms within minutes. They relax the muscles in the wall of the airways for up to four hours, allowing air to more easily move through the airways
- **Symptom controllers** - (also called long-acting relievers) help to relax the muscles around the airways for up to 12 hours. They are taken every day and are only prescribed for people who are taking regular inhaled 'steroid' preventers
- **Combination medications** – combination of a preventer with a symptom controller in the same delivery device

### Delivery Devices

Most asthma medications are inhaled via either an aerosol inhaler (puffer) or dry powder inhaler. Most people use inhaled asthma medication because medication goes directly to the lungs and smaller doses can be given so there are fewer side effects.



Use of a spacer device (such as the one in the image above) optimises delivery of the drug dose to the smaller airways (and limits deposition in the mouth and throat). You should consult your local GP who can help you prepare a written Asthma Action Plan, including information about:

- monitoring your symptoms
- the correct selection and use of medications and delivery devices
- the appropriate actions in case of worsening asthma

### Asthma First Aid

- Sit the person upright and give reassurance. Do not leave the person alone.
- Without delay give 4 puffs of a reliever (Airomir, Asmol, Epaq or Ventolin)\*. The medication is best given one puff at a time via a spacer device\*\*. Ask the person to take 4 breaths from the spacer after each puff of medication.
- Wait 4 minutes. If little or no improvement repeat step 2 and wait a further 4 minutes.
- If there is still no improvement call an ambulance (Dial 000).
- Continuously repeat steps 2 and 3 while waiting for the ambulance.

\* A Bricanyl Turbuhaler may be used in first aid treatment if a puffer and spacer are not available.

\*\* If a spacer is not available, simply use the puffer on its own.

Source: <http://www.asthmaaustralia.org.au/>

### Where to get help on Asthma

ASTHMA Foundation NSW provides free information:

- by phone 1800 ASTHMA (1800 278 462)
- by email [ask@asthmafoundation.org.au](mailto:ask@asthmafoundation.org.au)
- online at [www.asthmaaustralia.org.au](http://www.asthmaaustralia.org.au)

Reference: Charles Sturt University Online Article 2017







GOLD AWARD  
ASSEMBLY  
14TH NOVEMBER

White  
Ribbon  
27th Nov

YEAR 7 CAMP  
22ND – 25TH  
NOVEMBER

PRESENTATION NIGHT  
5TH  
DECEMBER

## Year 7

We are on the home stretch now until the end of Year 7! A year ago our year group was participating in the 6-7 Transition visits. The time has flown by so fast. Over that time, Year 7 students have achieved some amazing things. I would like to acknowledge and congratulate the following 'High Flyers' in Year 7.

### Ben Wood (Far Right):

- Placed with two 1<sup>st</sup>s and a 3<sup>rd</sup> in Free sparring, Continuous sparring and Sumo in the State Finals of the
- Australian Martial Arts Championships (AMAC).
- Ben will now represent NSW at the National Championships at Homebush later this year.

### Lennix Smith (Far Left):

- Placed 2<sup>nd</sup> at the Woolworths Surfer Grom's Kiama

### Oceanna Rogers:

- Placed 1<sup>st</sup> at the Woolworths Surfer Groms Cronulla and won all her heats.
- Placed 2<sup>nd</sup> at the Woolworths Surfer Groms Kiama
- Placed 4<sup>th</sup> at the NSW State Grommet Surf Titles
- Placed 3<sup>rd</sup> at the U/14's Australian Open Surfing

### Miranda Blades:

- Qualified as an NSW State rep for National Gymnastics (Olympic level in Youth Division) and came second in teams at Nationals.

### Claire Woolley:

- Completed an outstanding 'Dream Bedroom Portfolio' Technology assignment.



**Julianna Pitt:**

- Wrote a sensational creative writing story in English

Congratulations on your wonderful achievements Ben, Oceanna, Lennix, Miranda, Claire and Julianna. You should all be very proud of your performances and hard work you have put in to achieve such wonderful outcomes.

I would love to hear about more of our year groups' achievements and recognise their efforts. Please encourage your child to communicate their achievements to Mrs Lambert, Year 7 Advisor.

Countdown to Year 7 Camp is on! Wednesday 22<sup>nd</sup> – Friday 24<sup>th</sup> November Week 7, at Longbeach Batemans Bay. An information note detailing 'What to bring' will be distributed soon. Please encourage communication with your child regarding Year 7 Camp as the date approaches.



Keep striving hard to improve your learning outcomes as Year 7 comes to an end.

**Mrs Lambert**  
**Year 7 Advisor**

## Year 8

It is hard to believe that we find ourselves almost mid-way through term 4! There may only be a handful of weeks left for Year 8 but don't be fooled, it is still as busy as ever at Warilla High School. Our Creative and Performing Arts (CAPA) Committee recently displayed a large range of their work at an exhibition within the local community. The exhibition was a great success, drawing praise from both community and the Illawarra Mercury. As always, it is great to see students taking advantage of extra-curricular opportunities made available to them. Well done to all involved!

Over the next few weeks, year 8 will undertake VALID testing, which is an online Science-based test. This is an important process for year 8 and will not only enable students to understand their individual progress in Science but also prepare them for their NAPLAN testing which will take place in 2018. We wish all students the best of luck in their testing and hope they find the experience valuable.

Term 4 is our second reporting period for the year and students will receive their reports towards the end of the school year. It is important that students are completing and handing in all assessments and ensuring they catch up and complete any they may have missed.

It will be a busy lead up to the end of the year so I wish all of year 8 the best of luck in their studied, upcoming testing and extra-curricular activities!

**Ms Fitzgerald**  
**Year 8 Advisor**

## Year 9

Year 9 Camp was a great success, many students enjoyed the time that they had to bond with their peers and teachers. The activities really pushed some students to address some of their inbuilt fears and overcome challenges they may not have usually attempted. The camp was a great and worthwhile experience that will give them memories for many years to come. The Camp leaders from Sydney Academy of Sport and Recreation were full of praise of the students who attended and were very impressed with their behaviours and attitudes towards all of the activities, which is a commendation to all the students who attended.

**Mrs Bujaroski**

**Year 9 Advisor**

## Year 10

A huge thankyou to parents and caregivers for finalising payments of the Senior Hoodies. Our order broke all records and the hoodies will (fingers crossed) be here by the end of the year. I have also had some students who have missed the cut off date, still wishing to make a purchase. The good news is that this may be possible if I can get ten students to pay in the new year. We will then be able to make an additional order.

Report time is approaching fast!! I encourage all Year 10 students to complete their junior schooling with maturity and continuing application. Let's finish off 2017 in style...

**Mr Roskell**

**Year 10 Advisor**

## Year 11

Yr 11 have been working well beginning their final year of schooling and completing the year 12 work. There have been various modified patterns of study for some students to allow for optimum results. All subjects and patterns of study need to be finalised now to allow for a smooth education.

Please remember to utilise the study tips given to you on the yr 12 information night and liaise regularly with your teachers with your summaries. Tutoring is still available for all students on Tuesdays for juniors and seniors Wednesdays for seniors and the Homework centre is also on Wednesday afternoons.

Please see me if you need any further support.

**Mr Cairncross**

**Year 11 Advisor**

## Edrolo for Year 12



Warilla High School has enabled the use of Edrolo, a study and exam resource that will be utilised across a range of HSC subjects for remainder of 2017 and 2018.

Edrolo is a comprehensive, premium, online, interactive video and exam simulation resource for the HSC that we are confident it will provide our students with a differentiated and targeted level of support as they prepare for their most important assessments and examinations.

### ***What can you do to support your child(ren)?***

We recommend you simply start by engaging in conversation about their Edrolo account if you notice they are struggling with their coursework, or don't know what to do next in their study program. Examples of use are:

- holiday homework;
- pre-class work;
- post-class consolidation;
- assessment preparation;
- exam revision.

Edrolo is accessed simply by logging in to the Edrolo website: [edrolo.com.au](http://edrolo.com.au). Every student in the subjects listed below, has been provided with a unique account that helps to track their progress throughout each subject. Students can access Edrolo anywhere there is an internet connection using their device of choice: laptop, PC, tablet or smartphone. There is no downloading of applications or software.



- Business Studies
- Biology
- Chemistry
- PDHPE
- Maths General 2

Please contact Mrs Pettit if you have any questions or concerns.

**Mrs Pettit**

**Head Teacher Teaching and Learning**

## 7H Gardening

Students from 7H have been extremely busy for two terms now in one of the school gardens. Starting with garden beds filled with weeds, the patches have been completely transformed into gardens with elements of olericulture (growing vegetables) and permaculture (creating a sustainable garden) considered.

Hard work went into the garden including researching which plants grew best next to each other, which were right for the climate and season, what sort of fertiliser they needed and the amount of sun each plant needed.

We pulled out the overgrown weeds, we studied and identified invertebrates (including a class worm dissection!) and we chose and planted both Australian native edible plants like Davidsons Plum, Macadamia and Apple Berry as well as conventional western farm foods like carrots, capsicum and eggplant. This has complemented our "Classification" topic nicely and allowed the class to gain some valuable life skills!


**Edrolo**

# The ultimate resource for year 12 students, teachers, and schools

Curriculum focused video lessons, exam practice, and study planning tools. Crafted by the country's best teachers and powered by tomorrow's technology.





## 17 Collective CAPA Exhibition @ Red Point Art Gallery

This term the CAPA faculty got out of the 'Virtual Gallery' and into a real one!!! The event involved singers, musicians, artists and photographers. Congratulations to all the students who exhibited and performed!! The works looked fantastic and we received lots of positive feedback from the community. Thank you to Red Point Art Gallery in Port Kembla for hosting us and a MASSIVE thank you to X-Ttra Newsagency in Port Kembla for all your sponsorship and support with the event.

The event was coordinated and organised by the CAPA Committee. These students demonstrated exemplary leadership and teamwork skills to curate, organise and cater the event. Well done to these students!

*Miss Lever*

### **Thank you to the following Businesses for supporting Warilla High School's Creative and Performing Arts Exhibition**

Anna & Sons Jewellers - Warilla  
 Gold City - Warilla  
 X- Tra - Port Kembla  
 Alchemy Health Clinic – Port Kembla  
 Warrawong Plaza – Warrawong  
 Target – Shellharbour  
 X- Tra – Warrawong  
 Tonitto Continental Cakes – Port Kembla  
 Rebel Sports – Warrawong  
 Gloria Jeans – Warilla  
 DVD World – Warrawong  
 Vodafone – Warrawong  
 PHT Nails & Beauty - Warrawong  
 Hoyts – Warrawong  
 Mitchells Fruit Market – Warilla  
 Fish Feast – Warrawong  
 Golden Roast – Warrawong  
 PK Quality Meats – Port Kembla  
 Australia Post – Port Kembla  
 The Coffee Emporium – Warrawong  
 Books & More 4 Less – Warrawong  
 Jemma Wood- The Body Shop – Home Service  
 Priceline – Warrawong  
 Priceline Pharmacy – Warrawong  
 Pearl Nails – Warrawong  
 Blooms Chemist – Warilla  
 Harbourview Takaway – Shellharbour Village

**CAPA**  
@ RED POINT GALLERY

*Gallery*



# Warilla High School

## Uniform Shop Special Opening Hours

2018



### January 2018

Monday	22nd. January	8:00AM - 2:00PM
Tuesday	23rd. January	8:00AM - 2:00PM
Wednesday	24th. January	8:00AM - 2:00PM
Thursday	25th. January	8:00AM - 2:00PM
Friday	26th. January	CLOSED
Monday	29th. January	8:00AM - 4:00PM
Tuesday	30th. January	8:00AM - 4:00PM
Wednesday	31st. January	8:00AM - 4:00PM

### February 2018

Thursday	1st. February	8:00AM - 4:00PM
Friday	2nd. February	8:00AM - 1:00PM

**THEN EVERY WEDNESDAY:**

**12:00pm - 5:00pm**

**FRIDAY:**

**8:00am - 1:00pm**

UNIFORM ENQUIRES PLEASE PHONE:0401 680 325

**Purchase Online: [daylightsportswear.com/warilla](http://daylightsportswear.com/warilla)**

PRICE LIST / ORDER FORM ON THE BACK

MASTERCARD VISA EFTPOS NOW AVAILABLE, CHEQUES NOT ACCEPTED. NO LAYBY.

**Daylight Sportswear Pty Ltd**

ABN 76 069 733 455

6 - 8 Lone Pine Pl, Smeaton Grange NSW 2567

**Tel: (02) 4648 1066 Fax: (02) 4647 0143**

Email: daylight@daylightcorp.com

**Warilla High School UNIFORM SHOP**  
**Price List**

NAME: \_\_\_\_\_ YEAR: \_\_\_\_\_ DATE: \_\_\_\_\_ REC# \_\_\_\_\_

ITEM		PRICE	SIZE	QTY	TOTAL INCL GST
<b>Girls</b>	SNR Sky Blouse	28.00			
	Girls Shorts	36.00			
	JNR Navy Skirt	40.00			
	SNR Tartan Skirt	48.00			
<b>Boys</b>	SNR Boys Sky Shirts	28.00			
	Boys Navy Shorts	36.00			
<b>Unisex</b>	Fleecy Jackets	39.00			
	JNR Polo	30.00			
<b>Sports</b>	Sport Jackets	55.00			
	Royal Sports Shorts	28.00			
	Sports Shorts	25.00			
	Trackpants	37.00			
	Sports Polo	35.00			
<b>Accessory</b>	Navy Scarf	12.00			
	Boys Navy Tie	20.00			
	Girls Tie	10.00			

**UNIFORM ENQUIRES PLEASE PHONE: 0401 680 325**

**Purchase Online: [daylightsportswear.com/warilla](http://daylightsportswear.com/warilla)**

MASTERCARD VISA EFTPOS NOW AVAILABLE, CHEQUES NOT ACCEPTED. NO LAYBY.





Ian Picton SCDSA Branch President  
71 Doris Ave Woonona 2517  
(02)42844539 , 0421601222  
[ian\\_picton@optusnet.com.au](mailto:ian_picton@optusnet.com.au)  
[www.disabledsurfers.org](http://www.disabledsurfers.org)

The Principal,

Please find enclosed a promotional poster for the next Disabled Surfing event which is to be held on Saturday the 2<sup>nd</sup> December 2017 at Thirroul Beach. Our events are totally dependent on local communities volunteering their time to assist with the running (water safety) of the events on the day. A lot of our volunteers are in fact school age children who give up 4-5 hours on a weekend day to help those doing it a bit tougher than the rest of society. It would be appreciated if this poster could be printed out and placed on a notice board or in the school news letter for the information of students and parents alike.

If you would like one or two of our committee members to attend the school to give a short talk, aided by a visual display, to some of your year cohorts, please contact us for a mutual convenient time.

If you require any further information in relation to the DSA please review the website or face book page.



Regards,  
*Ian Picton*  
DSASC President  
18/10/2017



# Disabled Surfers South Coast

**Saturday 2nd Dec 2017**

## Thirroul 'SMILES ON DIALS DAY'

**Meet at Thirroul Beach, Just south of the pool**



**Check-in no later than 9.00am - Group-care facility participants limit of 6 per facility**

A fun day surfing experience for any person with a disability, no matter how challenging, with complete water supervision.

Registration for Participants is \$10 and all participants receive a bag of goodies,  
Thanks to the local participating surf shops and businesses.

Free registration for Volunteer Helpers and for giving up your time you will receive  
**FREE Sausage Sizzle** on the day.

*Last year over 150 people had a great day  
check out the video on Face Book!*

**<https://www.facebook.com/disabledsurfersassociationsouthcoast>**

**Or for more information and who to contact view  
[disabledsurfers.org/nsw/south-coast-branch](http://disabledsurfers.org/nsw/south-coast-branch) or [www.disabledsurfers.org](http://www.disabledsurfers.org)**

*DSAA Inc Insurance Covers All Events: both public liability and personal accident*



**See you there putting  
"Smiles on dials"**







**Come and join Kiama Swimming Club!**

**Our Winter 2017 season is underway.**

**Our Summer Season will start 13 October 2017**

**THE FIRST 2 WEEKS TRIAL ARE FREE!!**

Kiama Swim Club is all about fun, friends and fitness. We have swimmers of all levels and ages. Friday night Point-score gives our members the chance to practise their racing skills and build confidence.

We meet on Friday nights during school terms at the Kiama Leisure Centre.

**NEW MEMBERS ARE WELCOME** and the first 2 weeks are **FREE!**

Point-score gives swimmers the opportunity to race against their own P.B. (Personal Best).

We also run club championships once a season.

Our members can enter development or qualifying carnivals on various weekends throughout the season.

**When:** Friday nights during school terms.

**Where:** The Kiama Leisure Centre

**Time:** Race entries close at 6.45 sharp for a 7pm start

If you would like to enquire about Kiama Swimming Club please contact:

- **Registrar:** Emma Noonan at [kiamaswim@gmail.com](mailto:kiamaswim@gmail.com) Ph 0421 734 339
- Coaches Victor or Corinna

**If you would like to come and try before you join, we require pre registration.**

**Please email our registrar Emma Noonan with your child's full name and date of birth, to receive further information.**

**Find and "Like" us on Facebook - Kiama Swimming Club** 

**Website:** <http://kiama.swimming.org.au/>

**Email:** [kiamaswim@gmail.com](mailto:kiamaswim@gmail.com)



## Ten Year Anniversary Tullimbar Public School

# Let's Celebrate!!

For students who attended Tullimbar Public School, an invitation for you.

### Friday 3 November 2017

#### Open Day

9:30am	Wakakirri performance
9:50am	Open Classrooms
10:30am	Recess
11:30am	Special School Assembly that celebrates this significant milestone.

Please arrive by 11.20am for the Special Assembly that commences at 11.30am in the school hall.  
The school looks forward to your company at this very special event.

**Students are to obtain permission from their school to attend.**

**Saturday 4 November 2017 10.00am to 2.00pm** – Spring Fair with Rides.

**Saturday 4 November 2017 6.00pm** - 10 Year Anniversary Dinner (over 18s)

(refer to the school website for additional information)

*[www.tullimbar.nsw.edu.au](http://www.tullimbar.nsw.edu.au)*





**PCYC** | POLICE CITIZENS  
YOUTH CLUBS

# SAFER DRIVERS COURSE FOR LEARNER DRIVERS



## THE SAFER DRIVERS COURSE INVOLVES TWO MODULES:

### MODULE ONE:

A three-hour facilitated group discussion on how to manage risks on the road. This will involve a maximum of 12 participants and will be delivered by a facilitator.



### MODULE TWO:

A two-hour, in-vehicle coaching session to develop low-risk driving strategies. This will involve two participants and a coach.

**Course cost: \$140**



Participants must have completed 50 hours of actual on-road driving experience to be eligible for the course. Credits gained under the 3-for-1 scheme cannot be included.

**LEARNER DRIVERS WHO COMPLETE THE COURSE WILL RECEIVE 20 HOURS OFF THEIR LOG BOOK.**

**20 hours  
Off Your  
Log Book**

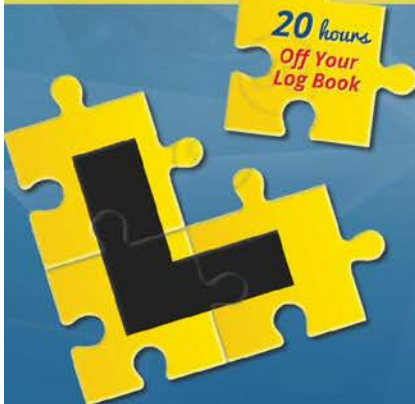
## ALL PARTICIPANTS MUST:

- Hold a valid NSW Learner Licence
- Be under 25 years of age
- Have completed 50 logbook hours (of actual on road experience and not credits gained under the 3 for 1 professional instruction scheme)

**PCYC Lake Illawarra**

**4296 4448**

**lakeillawarra@pcycnsw.org.au**



<https://www.facebook.com/PCYCLakeIllawarra/>





## **Safer Drivers Course for Learner Drivers**

### **2017 course dates**

**2<sup>nd</sup> May 2017**

**16<sup>th</sup> May 2017**

**30<sup>th</sup> May 2017**

**13<sup>th</sup> June 2017**

**27<sup>th</sup> June 2017**

**11<sup>th</sup> July 2017**

**25<sup>th</sup> July 2017**

**8<sup>th</sup> August 2017**

**22<sup>nd</sup> August 2017**

**5<sup>th</sup> September 2017**

**19<sup>th</sup> September 2017**

**10<sup>th</sup> October 2017**

**24<sup>th</sup> October 2017**

**7<sup>th</sup> November 2017**

**21<sup>st</sup> November 2017**

**12<sup>th</sup> December 2017**





**Education**  
Centre for Education  
Statistics & Evaluation

# *Tell Them From Me* parent survey Frequently Asked Questions (parents and carers)

Centre for Education Statistics and Evaluation

## 1. What is the Partners in Learning parent survey?

The Partners in Learning parent survey is part of the *Tell Them From Me* suite of surveys on student engagement. The parent survey helps to clarify and strengthen the important relationship between parent and school.

The survey is designed to measure, assess and report insights from the parent point of view at the school and system levels. The focus of this NSW survey is on student wellbeing, engagement and effective teaching practices.

## 2. What kind of questions will the survey ask?

The survey questions aim at understanding parents' perspectives on their child's experience at school, including teaching, communication and the school's support of learning and behaviour. The survey also aims to understand parents' perspectives on activities and practices at home related to their child's learning.

The survey will ask parents questions about:

Parents feel welcome	Parents are informed	Parents support learning at home	Parents participation at school
School supports positive behaviour	Safety	Inclusion	School supports learning

## 3. How have schools been selected to take part?

The survey is open to all NSW government schools at no cost to them. Your school has decided to participate.

## 4. How will taking part in this survey benefit my child's school?

The parent survey provides school principals and school leaders with parents' perspectives on their school as well as learning at home. Communication between parents and staff, activities and practices at home, and parent views on the school's support of learning and behaviour help build an accurate and timely picture that schools can use for practical improvements.

Data collected from the survey responses are quickly compiled into reports for school leaders. Principals can then use this information to help them identify emerging issues and plan for school improvement.

## 5. How does the parent survey relate to the student survey?

The parent survey is complementary to the *Tell Them From Me* student survey that your child may have been asked to complete. These surveys are offered (along with a teacher survey) to ensure schools can capture the views of students, teachers and parents.

For more detail on each of the surveys, see the survey website: <http://surveys.cese.nsw.gov.au/>

## 6. What do I need to do to participate in the survey?

The survey typically takes 15 minutes and is conducted entirely online through a secure website operated by the survey developers, *The Learning Bar*. You will be provided with a link to complete the survey at home or your school may make computers available so that you can complete the survey during school hours.

## 7. Do I need to participate?

No, participation in the survey is optional. Whilst your responses are very much appreciated, if during the survey, you feel uncomfortable, you can stop the survey at any time. The majority of questions in the survey can be skipped.

## 8. Will the school be able to identify me or my child from my responses?

Staff in schools will not be able to identify individual parents or students from parent responses. To protect parent anonymity, schools will be provided with a single username and password for the school prior to the start of the survey period. This username and password will then be distributed to parents. Data suppression rules are applied to the school reporting tools where there are fewer than five responses.

## 9. What sort of analysis will be done of the survey data?

Once the surveys are completed, reports are prepared and in most cases are available to schools within three business days. School leaders can use the data to better understand the experiences and views of parents at their school.

CESE will undertake state-wide analysis of the survey data in conjunction with existing student data held by the department, including performance data. The results will help all schools better understand the relationship between parents and students' engagement, students' wellbeing, effective teaching and student learning. Results from CESE's analysis of this data will also help teachers and principals discuss what works to improve student outcomes. This supports the department's continuing focus on quality teaching and leadership. The data will be retained for future analysis to help us better understand the nature of student engagement and wellbeing over time.

## 10. When will the Partners in Learning survey happen?

The surveys will be conducted in all participating schools between Monday 21st August (Week 6, Term 3) and Friday 13th October 2017 (Week 1, Term 4).

### What is CESE?

The Centre for Education Statistics and Evaluation (CESE) is part of the Department of Education.

CESE has been established to improve the effectiveness, efficiency and accountability of education in New South Wales.

CESE will identify and share what works, creating new opportunities to improve teaching and learning across all of education.

More information about CESE is available at: [www.cese.nsw.gov.au](http://www.cese.nsw.gov.au)

### What is *The Learning Bar*?

*The Learning Bar* specialises in research-based design and facilitation of student assessments and survey solutions for both primary and secondary students. The in-house research team led by the President, Dr J Douglas Willms, undertakes extensive projects used in the school system to effect national policy. It is against this research that the survey, *Tell Them From Me*, has become the largest national school survey in Canada, used in nine of the ten provinces. More than 4,500 schools and 3.5 million Canadian students have participated in the survey over the last twelve years.

Dr Willms holds the Canada Research Chair in Literacy and Human Development and played a lead role in the development of questions on student engagement for the OECD's Programme for International Student Assessment (PISA).

More information about *The Learning Bar* is available at: [www.thelearningbar.com](http://www.thelearningbar.com)

If you have any questions about the parent survey, please contact CESE via email: [TTFM@det.nsw.edu.au](mailto:TTFM@det.nsw.edu.au) or by telephone: 9561 8056 / 9561 8370.





## Warilla School Road Safety and Traffic Management



Shellharbour City Council in conjunction with Warilla High School, Department of Education and the New South Wales Police Service have been working hard to improve road safety and traffic management within the 40km School Zone at your school.

An education campaign will begin on **Monday, 14 August 2017** and conclude on **Friday, 1 September 2017**. The aim of the campaign is to educate parents & friends, students, staff and the general public about the changes to the traffic environment, the related road rules, offences and the possible consequences for non-adherence. Council Rangers and Police will be targeting this area to ensure compliance with road rules and the signage.

### Changes to Keross Avenue include:

1. Installation of a Shared Use Path extending from the entrance of the school to Sammit Avenue.
2. Pedestrian barrier fence, separating pedestrians and vehicular traffic.
3. The breaks in the fence are designed to channel students to board buses in an orderly fashion.
4. Students heading south should cross at the pedestrian refuge adjacent to the front entrance of the school.
5. Students heading north or east should remain on the Shared use Path and cross at Sammit Avenue to access traffic lights on Shellharbour Road.
6. Students heading west should use traffic and pedestrian facilities to ensure a safe journey home.
7. An existing no parking (kiss and drop) zone between 8.00am – 9.30am & 2.30pm – 4.00pm. School Days ONLY. Unrestricted parking is permitted outside these times. This is located west of the school entrance.
8. No parking means you can stop for no more than 2minutes and move no further than 3metres away from your vehicle. This will allow you to get out of the kerb side door and enter the school gate safely no further than 3metres away from your vehicle. This will allow you to help your child to get out of the 'Safety (Rear kerb side) Door' and watch them enter the school gate safely. This is not the area to park if you need to attend to business in the school office. You will need to park in an unrestricted parking area.
9. There are heavy fines and demerit points for stopping in a no parking zone. For more information please see below.
10. All motorists are encouraged to move forward in the no parking zone. If there is no spaces available in the no parking zone 'Do a Loop via Keross Avenue, Abelia Street and Cassia Street and Daphne Street to join the queue on Keross Avenue.

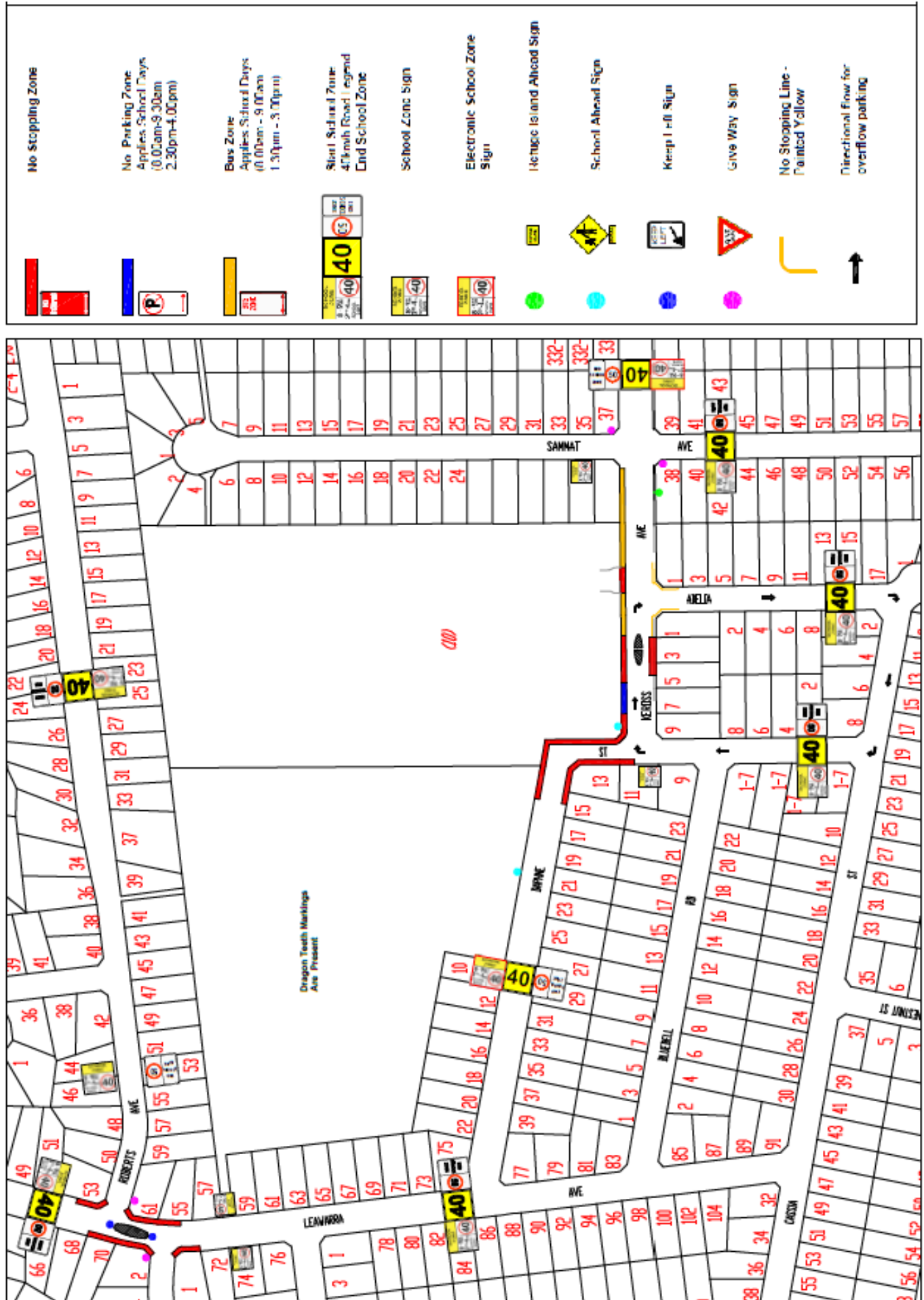
### Parking Offences, related fines and demerit points

Parking Offence	Fine	Demerit points
Stop on parking area for disabled without current disability permit displayed	\$549	1
Park continuously for longer than permitted	\$110	-
Stop on path /strip in built up area – School zone	\$183	2
Double park – School zone	\$330	2
Stop in bus zone – School zone	\$330	2
Stop on or near pedestrian crossing –School zone	\$439	2
Stop at side of road with continuous yellow edge line	\$257	-
Disobey no parking – School zone	\$183	2
Disobey no stopping – School zone	\$330	2

For all other Traffic Infringement Notices including speeding and seatbelt offences in a school zone visit [www.rms.nsw.gov.au](http://www.rms.nsw.gov.au)

For further assistance please contact Jenny Davies, Road Safety Officer, Shellharbour City Council on 4221 6111.

# Warilla High School Traffic Management Plan





# DOMAYNE

## Exclusive Offer

**Lenovo**  
110S

**\$298**



Processor - Celeron Dual-Core  
Memory - 4GB  
Storage - 64GB SSD  
Network 802.11ac (5GHz Dual Band)  
Windows 10  
Screen Size - 14" Display

**FLEXI**<sup>®</sup>  
**RENT**  
**BENEFITS**



**PROTECTION**

If your Student Device is stolen, accidentally lost or accidentally damaged, we'll repair or replace the goods\*.



**LOANER GOODS**

If your device is in for repair we may provide a loaner device on selected goods\*.



**DOUBLE TIME**

For 1 extra monthly rental payment, you can double the term of your original rental agreement, and continue using the goods with the benefits of FlexiCare for the extended term\*.



**KEEP YOUR CASH**

No deposit or set-up fees are required upfront so you can hold onto your cash and take the goods home today.



**MANAGE YOUR BUDGET**

You can select a wide choice of payment terms. You can select one that suits your budget. Choose between 12, 24 or 36 months.

**Hewlett-Packard**  
14-AN006AU

**\$399**



Processor - C2 Quad-Core  
Memory Ram - 4GB  
Storage - 500GB  
Network 802.11ac (5GHz Dual Band)  
Windows 10  
Screen Size - 14" Display

### BASIC

- 1 Year Product Care Replacement Plan
- Carry bag/case

**\$68**

### PREMIUM

- 2 Year Product Care
- Carry bag/case
- Internet Security (12 Months)
- 16GB USB Drive

**\$192**

### ULTIMATE

- 3 Year Product Care
- Carry bag/case
- Internet Security (12Months)
- Hard Drive
- Wireless Mouse
- Headphones

**\$308**

\*Provided under the FlexiCare Program and subject to terms and conditions and important exclusions and limitations. \*New rental agreements and all end of term options (other than return) and including requests for upgrades. #Acceptance of the double time payment offer is available on eligible approved and settled deals and is subject to credit criteria

DOMAYNE COMPUTERS 119-121 King Street Warrarong NSW 2502 Ph: 02 4255 1800 Fax: 02 4255 1896





# DOMAYNE

## Exclusive Offer

**Hewlett-Packard**

11-AB047TU

**\$678**



Processor - Pentium Quad-Core  
Memory - 8GB  
Storage - 128GB SSD  
Network 802.11ac (5GHz Dual Band)  
Windows 10  
Screen Size - 11.6" Touch Display

**FLEXI<sup>®</sup>**  
**RENT**  
**BENEFITS**



**PROTECTION**

If your Student Device is stolen, accidentally lost or accidentally damaged, we'll repair or replace the goods\*.



**LOANER GOODS**

If your device is in for repair we may provide a loaner device on selected goods\*.



**DOUBLE TIME**

For 1 extra monthly rental payment, you can double the term of your original rental agreement, and continue using the goods with the benefits of FlexiCare for the extended term\*.



**KEEP YOUR CASH**

No deposit or set-up fees are required upfront so you can hold onto your cash and take the goods home today.



**MANAGE YOUR BUDGET**

You can select a wide choice of payment terms. You can select one that suits your budget. Choose between 12, 24 or 36 months.

**Acer**

SP111-32-P1KR

**\$788**



Processor - Pentium Quad-Core  
Memory Ram - 4GB  
Storage - 128GB SSD  
Network 802.11ac (5GHz Dual Band)  
Windows 10  
Screen Size - 14" Display  
Pen included

### BASIC

- 1 Year Product Care Replacement Plan
- Carry bag/case

**\$96**

### PREMIUM

- 2 Year Product Care
- Carry bag/case
- Internet Security (12 Months)
- 16GB USB Drive

**\$227**

### ULTIMATE

- 3 Year Product Care
- Carry bag/case
- Internet Security (12 Months)
- Hard Drive
- Wireless Mouse
- Headphones

**\$387**

\*Provided under the FlexiCare Program and subject to terms and conditions and important exclusions and limitations. \*New rental agreements and all end of term options (other than return) and including requests for upgrades. #Acceptance of the double time payment offer is available on eligible approved and settled deals and is subject to credit criteria.

DOMAYNE COMPUTERS 119-121 King Street Warrawong NSW 2502 Ph: 02 4255 1800 Fax: 02 4255 1896





# DOMAYNE

## Exclusive Offer

### Macbook Air 13"

**\$1478**



Processor - Intel i5 1.8GHz  
Memory - 8GB  
Storage - 128GB SSD  
Network 802.11ac (5GHz Dual Band)  
Screen Size - 13.3" Touch Display  
Up to 12 hours battery life

### FLEXI<sup>®</sup> RENT BENEFITS



#### PROTECTION

If your Student Device is stolen, accidentally lost or accidentally damaged, we'll repair or replace the goods\*.



#### LOANER GOODS

If your device is in for repair we may provide a loaner device on selected goods\*.



#### DOUBLE TIME

For 1 extra monthly rental payment, you can double the term of your original rental agreement, and continue using the goods with the benefits of FlexiCare for the extended term\*.



#### KEEP YOUR CASH

No deposit or set-up fees are required upfront so you can hold onto your cash and take the goods home today.



#### MANAGE YOUR BUDGET

You can select a wide choice of payment terms. You can select one that suits your budget. Choose between 12, 24 or 36 months.

### Macbook Pro 13"

**\$1886**



Processor - Intel i5 2.3GHz  
Memory - 8GB  
Storage - 128GB SSD  
Network 802.11ac (5GHz Dual Band)  
Screen Size - 13.3" Touch Display  
Up to 10 hours battery life

#### BASIC

- 1 Year Product Care Replacement Plan
- Carry bag/case

**\$249**

#### PREMIUM

- 2 Year Product Care
- Carry bag/case
- Internet Security (12 Months)
- 16GB USB Drive

**\$488**

#### ULTIMATE

- 3 Year Product Care
- Carry bag/case
- Internet Security (12Months)
- Hard Drive
- Wireless Mouse
- Headphones

**\$749**

\*Provided under the FlexiCare Program and subject to terms and conditions and important exclusions and limitations. \*New rental agreements and all end of term options (other than return) and including requests for upgrades. #Acceptance of the double time payment offer is available on eligible approved and settled deals and is subject to credit criteria.

DOMAYNE COMPUTERS 119-121 King Street Warrarong NSW 2502 Ph: 02 4255 1800 Fax: 02 4255 1896

## High Attendance Equals High Achievement

### What is a justified reason for being absent from school?

Justified reasons for absences may include if the student:

- has an unavoidable medical or dental appointment (preferably, these should be made after school or during holidays)
- is required to attend a recognised religious holiday
- is required to attend an exceptional or urgent family circumstance (such as attending a funeral)
- is sick, or has an infectious disease.

Absences for reasons such as some of the following may not be justified.

- Shopping
- Sleeping in
- Working around the house
- Minding younger siblings and other children
- Minor family events such as birthdays
- Haircuts.

It is important to realise that parents (including carers) may be prosecuted if children have recurring unjustified absences from school.

If you have any questions regarding student attendance, please contact the school.

**Mr S. Kershaw**

**Head Teacher Student Administration**

## Online Uniform Store

Looking to purchase your child's school uniform online?

We now have a brand new 'Shop Now' button on our Facebook page, click it and it will take you straight to our online store! No need to get out of your chair!

Alternatively, you can visit our school website ([www.warilla-h.schools.nsw.edu.au](http://www.warilla-h.schools.nsw.edu.au)) -> Our School -> Uniform -> Online Store and this will take you there.



## Make Online Payments (POP)

Is now possible for parents to make online payments to the school for amounts owing for students, via a secure payment page hosted by Westpac. Payments can be made using either a Visa or MasterCard credit/debit card. The payment page is accessed from the front page of the [school's website](#) by selecting \$ Make a payment

Items that can be paid include voluntary school contributions, subject contributions, excursions, sales to students and creative and practical arts activities (these include band, drama and dance). There is also a category called “other”, this would cover items not covered under the previous heading. ‘Other’ can be used to make a complete payment of a school invoice.

When you access the \$ Make a payment you must enter:

- The student's name, and
- class and reference number OR
- The student's name, and
- Date of birth.

These details are entered each time you make a payment, as student information is not held within the payment system.

This is a secure payment system hosted by Westpac to ensure that your credit/debit card details are captured in a secure manner and these details are not passed back to the school.

You have the ability to check and change any details of the payment before the payment is processed. Receipts can be emailed and/or printed.

Details of the payments are passed daily to the school where they will be receipted against your child’s account. As a receipt has been issued from the payment page a further receipt will not be issued by the school.

For any enquiries regarding the Online Payment process please contact the office staff on 02 4296 3055 or alternatively email;

[warilla-h.school@det.nsw.edu.au](mailto:warilla-h.school@det.nsw.edu.au)

***The Office Staff***





Education &  
Communities

# Compulsory School Attendance

Information for parents

Education for your child is important and regular attendance at school is essential for your child to achieve their educational best and increase their career and life options. NSW public schools work in partnership with parents to encourage and support regular attendance of children and young people. When your child attends school every day, learning becomes easier and your child will build and maintain friendships with other children.

## What are my legal responsibilities?

Education in New South Wales is compulsory for all children between the ages of six years and below the minimum school leaving age. The *Education Act 1990* requires that parents ensure their children of compulsory school age are enrolled at, and regularly attend school, or, are registered with the Board of Studies, Teaching and Educational Standards for homeschooling.

Once enrolled, children are required to attend school each day it is open for students.

## The importance of arriving on time

Arriving at school and class on time:

- Ensures that students do not miss out on important learning activities scheduled early in the day
- Helps students learn the importance of punctuality and routine
- Give students time to greet their friends before class
- Reduces classroom disruption

Lateness is recorded as a partial absence and must be explained by parents.

## What if my child has to be away from school?

On occasion, your child may need to be absent from school. Justified reasons for student absences may include:

- being sick, or having an infectious disease
- having an unavoidable medical appointment
- being required to attend a recognised religious holiday
- exceptional or urgent family circumstance (e.g. attending a funeral)

Following an absence from school you must ensure that within 7 days you provide your child's school with a verbal or written explanation for the absence. However, if the school has not received an explanation from you within 2 days, the school may contact you to discuss the absence.

Principals may decline to accept an explanation that you have provided if they do not believe the absence is in the best interest of your child. In these circumstances your child's absence would be recorded as unjustified. When this happens the principal will discuss their decision with you and the reasons why.

Principals may request medical certificates or other documentation when frequent or long term absences are explained as being due to illness. Principals may also seek parental permission to speak with medical specialists to obtain information to collaboratively develop a health care plan to support your child. If the request is denied, the principal can record the absences as unjustified.

## Travel

Families are encouraged to travel during school holidays. If travel during school term is necessary, discuss this with your child's school principal. An *Application for Extended Leave* may need to be completed. Absences relating to travel will be marked as leave on the roll and therefore contribute to your child's total absences for the year.

In some circumstances students may be eligible to enrol in distance education for travel periods over 50 school days. This should be discussed with your child's school principal.







### **My child won't go to school. What should I do?**

You should contact the principal as soon as possible to discuss the issue and ask for help. Strategies to help improve attendance may include a referral to the school's learning and support team or linking your child with appropriate support networks. The principal may seek further support from the Home School Liaison Program to develop an Attendance Improvement Plan.

### **What might happen if my child continues to have unacceptable absences?**

It is important to understand that the Department of Education and Communities may be required to take further action where children of compulsory school age have recurring numbers of unexplained or unjustified absences from school.

Some of the following actions may be undertaken:

- Compulsory Schooling Conferences

You may be asked, along with your child, to attend a Compulsory Schooling Conference. The conference will help to identify the supports your child may need to have in place so they attend school regularly. The school, parents and agencies will work together to develop an agreed plan (known as Undertakings) to support your child's attendance at school.

- Application to the Children's Court – Compulsory Schooling Order

If your child's attendance at school remains unsatisfactory the Department

may apply to the Children's Court for a *Compulsory Schooling Order*. The Children's Court magistrate may order a Compulsory Schooling Conference to be convened.

- Prosecution in the Local Court

School and Department staff remain committed to working in partnership with you to address the issues which are preventing your child's full participation at school. In circumstances where a breach of compulsory schooling orders occurs further action may be taken against a parent in the Local Court. The result of court action can be the imposition of a community service order or a fine.

### **What age can my child leave school?**

All New South Wales students must complete Year 10 or its equivalent. After Year 10, and up until they reach 17 years of age, there are a range of flexible options for students to [complete their schooling](#).

### **Working in Partnership**

The Department of Education and Communities recognises that working collaboratively with students and their families is the best way to support the regular attendance of students at school.

We look forward to working in partnership with you to support your child to fulfil their life opportunities.

**If a student misses as little as 8 days in a school term, by the end of primary school they'll have missed over a year of school.**

Further information regarding school attendance can be obtained from the following websites:

**Policy, information and brochures:**

<http://www.schools.nsw.edu.au/goto/school/a-z/attendance.php>

**The school leaving age:**

<http://www.schools.nsw.edu.au/leaving-school/index.php>

**Do you need an interpreter?**

Interpreting services are available on request, including for the hearing impaired. The Telephone Interpreter Service is available 24 hours a day, seven days a week on 131 450. You will not be charged for this service.

For further advice and questions contact your educational services team

T 131 536

Learning and Engagement

Student Engagement & Interagency Partnerships

T 9244 5129

[www.dec.nsw.gov.au](http://www.dec.nsw.gov.au)

© February 2015

NSW Department of Education and Communities

## Emergency Procedures

In a life threatening emergency, for FIRE, POLICE and AMBULANCE

**DIAL 000**

In **ALL CASES**, advise the Principal.

### Exits

For your safety, make sure you know the location of your nearest exit.

### Evacuation Alarm



CONTINUOUS RINGING OF BELL

### Evacuation Procedures

When the evacuation alarm sounds:

- Evacuate the building and proceed to the assembly area identified below.
- Do not re-enter until advised to do so.

### Lockdown Alarm



3 LONG, 2 SHORT BELL RINGS

### Lockdown Procedures

When the lockdown alarm sounds:

- Move to the closest secure point and ring the office to alert them to your whereabouts.



- ★ Fire Hydrants
- ★ First Aid Kits
- ★ First Aid Room
- ★ Evacuation Point



**WELCOME TO**

**Warilla High School**

## Safety Briefing

*For Contractors*

*Visitors and Volunteers*

The New South Wales Department of Education and Communities is committed to the occupational health and safety of employees, students, contractors and all other visitors.

For your safety and the safety of others, it is a condition of entry to this site that you take a few minutes to read this brochure.

Mandatory site requirements:

- All visitors are required to report to the main office on arrival.
- Observe all speed, parking and vehicular restrictions.
- Obey all safety signs and barricades.
- **Violent, threatening or other unacceptable behaviour is not tolerated on NSW Department of Education and Communities premises.**
- All contractors to have completed the [Safety procedures for engaging Department of Commerce contractors](#) **OR** [Safety procedures for engaging independent contractors](#)

- ❖ **Smoking** is not permitted on DEC premises.
- ❖ **Alcohol and Illegal Drugs** are not permitted on DEC premises.
- ❖ **Weapons**, including knives, are not permitted.
- ❖ **Dangerous Goods and Hazardous Substances**  
Visitors and contractors intending to bring dangerous goods on site must declare these at the main office prior to entering the site.
- ❖ **All Injuries, incidents and hazards** must be reported to the main office.
- ❖ Injuries will be recorded in the *Register of Injuries*.
- ❖ **First Aid** treatment is available on site.
- ❖ **Other**  
Add information about site specific issues here



All Department of Commerce contractors report to the principal or delegate to:

- indicate the location and duration of the job
- sign the school's Site Visit Log book
- advise the status of the job before leaving the site.

All non-Department of Commerce contractors must in addition:

- produce a copy of their safety management plan including use of personal protective equipment and controls for site specific hazards
- produce public liability insurance documentation before work is commenced
- complete a Prohibited Employment Declaration

I have complied with all WHS issues:

Signed: \_\_\_\_\_ Contractor  
Contractor name: \_\_\_\_\_  
Company: \_\_\_\_\_  
Date: \_\_\_\_/\_\_\_\_/\_\_\_\_

**Daylight Sportswear Pty Ltd**

ABN 76 069 733 455

6 - 8 Lone Pine, Smeaton Grange NSW 2567

**Tel: (02) 4648 1066 Fax: (02) 4647 0143**

Email: daylight@daylightcorp.com

**Warilla High School UNIFORM SHOP****Tax Invoice**

NAME: \_\_\_\_\_ YEAR: \_\_\_\_\_ DATE: \_\_\_\_\_ REC# \_\_\_\_\_

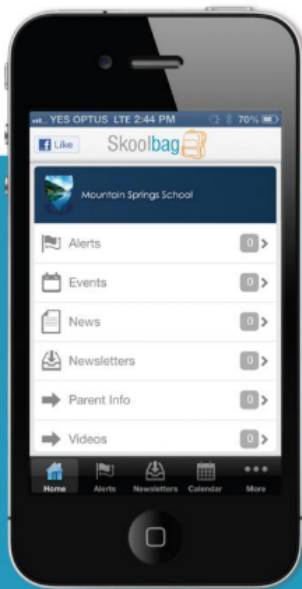
ITEM		PRICE	SIZE	QTY	TOTAL INCL GST
Girls	SNR Sky Blouse	28.00			
	Girls Navy Shorts	36.00			
	JNR Navy Skirt	40.00			
	SNR Tartan Skirt	48.00			
Boys	SNR Boys Sky Shirts	28.00			
	Boys Navy Shorts	36.00			
Unisex	Fleecy Jackets	39.00			
	JNR Polo	30.00			
Sports	Sport Jackets	55.00			
	Sports Shorts	25.00			
	Trackpants	37.00			
	Sports Polo	35.00			
Accessory	Navy Scarf	12.00			
	Boys Navy Tie	20.00			
	Girls Tie	10.00			

UNIFORM ENQUIRES PLEASE PHONE:0401 680 325

**Purchase Online: [daylightsportswear.com/warilla](http://daylightsportswear.com/warilla)**

MASTERCARD VISA EFTPOS NOW AVAILABLE, CHEQUES NOT ACCEPTED. NO LAYBY.





# Skoolbag

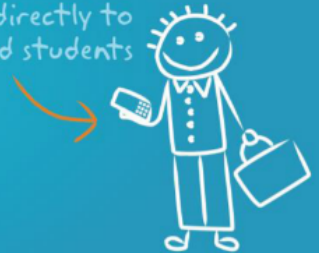
Smartphone school to parent communication



Skoolbag is a mobile App for your school to communicate directly to both parents and students. It works through both smart phones and smart devices (such as iPads and Android Tablets). Ideal for:

- > School, free push notification alerts
- > School events
- > School newsletters
- > School documents
- > School RSS feeds
- > School social media (Facebook, Twitter)

Skoolbag delivers school notices directly to parents and students



## How to Install Warilla High Skoolbag On Your Smartphone!

### iPhone/iPod & iPad Users

1. Click the "Apple App Store" icon on your device.
2. Type in Warilla High School in the search.
3. If iPhone/iPod, you will see our school appear, click "Get" then "Install"
4. When Installed click "Open"
5. Select "OK" to receive push notifications, when asked.




### Android Users

You must first have signed up with a Google Account before installing the app.

1. Click the "Play Store" button on your Android Device
2. Click the magnifying glass icon at the top and type in Warilla High School.
3. Click Warilla High School when it appears in the search.
4. Click the "Install" button/
5. Click "Accept" for various permissions (please note, we don't modify any of your persona; data on your devices).
6. Click "Open" when installed.



Don't forget to like us on Facebook! 

Find out more at [www.skoolbag.com.au](http://www.skoolbag.com.au)

Skoolbag delivers school notices directly to parents and students







**Warilla High School**

**Keross Ave, Barrack Heights, NSW, 2528**

**PH: 02 4296 3055 | Fax: 02 4257 1825**

**warilla-h.school @ det.nsw.edu.au**

**Web: <http://www.warilla-h.schools.nsw.edu.au>**

**Facebook: <https://www.facebook.com/WarillaHigh>**

**Sentral: <https://web1.warilla-h.schools.nsw.edu.au/portal>**